



Price
£200,000

Leasehold

2x  1x  1x 

**Milton Mount, Pound
Hill, Crawley, West
Sussex, RH10**

OVER 60?

Secure this property
for up to **59% less!**

cubitt&west
Helping you move forwards



Main features

- Large, well-presented apartment with stunning views over Worth Park grounds and a lift
- Refitted kitchen and updated bathroom
- Spacious lounge/dining room with lots of natural light
- Electric heating and double glazing
- No chain

Accommodation

SECOND FLOOR

Entrance Hall

Lounge/Dining Room: 20'0 x 10'5
(6.10m x 3.18m)

Kitchen: 8'11 x 8'8 (2.72m x 2.64m)

Bedroom 1: 14'6 x 8'8 (4.42m x 2.64m)

Bedroom 2: 13'8 x 8'9 (4.17m x 2.67m)

Dressing Room: 6'2 x 5'8 (1.88m x 1.73m)

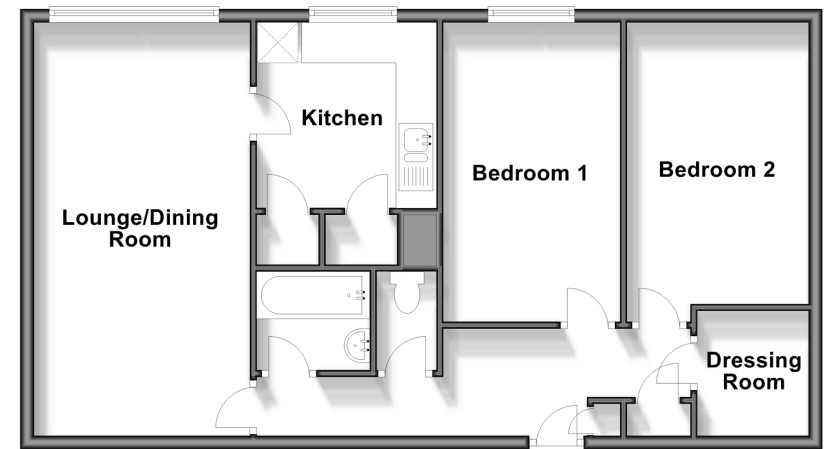
Bathroom

Separate Toilet

OUTSIDE

Communal Gardens

Second Floor
Approx. 69.7 sq. metres (750.5 sq. feet)



Call Crawley - 01293 522233 ■ cubittandwest.co.uk

- Legal advice should be taken to verify fixtures/fittings, planning, alterations and/or lease details
- Appliances & services are untested, dimensions are approximate and floor plans are not to scale
- Through a Homewise Home For Life Plan people aged 60+ can secure this property for up to 59% less, by purchasing a Lifetime Lease.

