



**Price**

**£150,000**

**Leasehold**

1x  1x  1x 

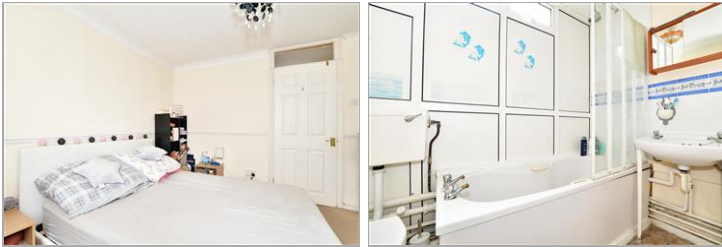
**Garden Walk, Crawley,  
West Sussex, RH11**

**OVER 60?**

Secure this property  
for up to **59% less!**

**cubitt&west**  
Helping you move forwards





## Main features

- Ground floor flat with no upper chain
- Local rental investment property
- Double glazing and radiator heating
- Short walk to Crawley's Town Centre and Railway station
- Communal gardens and outside storage shed

## Accommodation

### GROUND FLOOR

Entrance Hall

Lounge/Diner: 14'1 x 9'1 (4.30m x 2.77m)

Kitchen: 9'1 x 6'4 (2.77m x 1.93m)

Bedroom : 11'1 x 10'1 (3.38m x 3.08m)

Bathroom: 7'10 x 6'5 (2.39m x 1.96m)

### OUTSIDE

Communal Gardens

Storage Shed

## Ground Floor

Approx. 42.4 sq. metres (456.7 sq. feet)



**Call Crawley - 01293 522233 ■ [cubittandwest.co.uk](http://cubittandwest.co.uk)**

- Legal advice should be taken to verify fixtures/fittings, planning, alterations and/or lease details
- Appliances & services are untested, dimensions are approximate and floor plans are not to scale
- Through a Homewise Home For Life Plan people aged 60+ can secure this property for up to 59% less, by purchasing a Lifetime Lease.

