



**OVER 60?**

You could get up to  
**59% off** the price!\*

**Price**

**£165,000**

**Leasehold**

1x  1x  1x 

**Millfield Court, The  
Mardens, Ifield, Crawley,  
West Sussex, RH11**

**cubitt&west**  
Helping you move forwards





## Main features

- First floor apartment with lift
- Modern fitted kitchen and bathroom
- For the over 55's
- Communal gardens and resident parking
- Residents' facilities including a lounge, laundry room and guest suite

## Accommodation

### FIRST FLOOR

#### Entrance Hall

**Kitchen:** 9'0 x 5'8 (2.75m x 1.73m)

**Lounge/Diner:** 19'3 (5.87m) x 11'4 (3.46m) narrowing to 8'9 (2.67m)

**Bedroom:** 14'11 (4.55m) narrowing to 13'11 (4.24m) x 8'10 (2.69m)

**Bathroom:** 6'10 (2.08m) narrowing to 5'5 (1.65m) x 5'6 (1.68m)

### OUTSIDE

#### Communal Gardens

#### Residents parking

### RESIDENTS FACILITIES

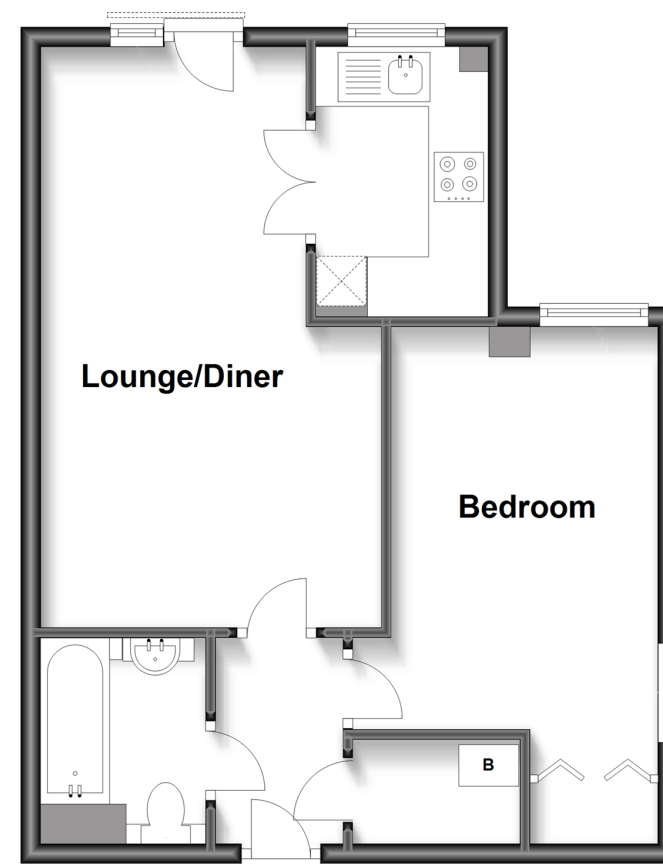
#### Communal Lounge

#### Residents Laundry Room

#### Guests Suite

## First Floor

Approx. 45.4 sq. metres (489.2 sq. feet)



**Call Crawley - 01293 522233 ■ [cubittandwest.co.uk](http://cubittandwest.co.uk)**

- Legal advice should be taken to verify fixtures/fittings, planning, alterations and/or lease details
- Appliances & services are untested, dimensions are approximate and floor plans are not to scale
- Our Homewise partnership offer a 'Home for Life' plan to buyers over 60, granting a lifetime lease for your protection and reducing the purchase price by up to 59%



20419018/20220825/DC/DC