



Price
£315,000

Freehold

3x  1x  1x 

**Slaugham Court,
Cowfold Close, Crawley,
West Sussex, RH11**

OVER 60?

Secure this property
for up to **59% less!**

cubitt&west
Helping you move forwards



Main features

- Extended family home with re-fitted kitchen
- Sold with no chain
- Within walking distance to 24 hour bus links
- Communal parking

Accommodation

GROUND FLOOR

Entrance Porch
Entrance Hall
Downstairs cloakroom
Lounge : 16'4 x 14'3 (4.98m x 4.35m)
Kitchen : 10'9 x 9'7 (3.28m x 2.92m)
Conservatory : 11'11 x 7'4 (3.63m x 2.24m)

FIRST FLOOR

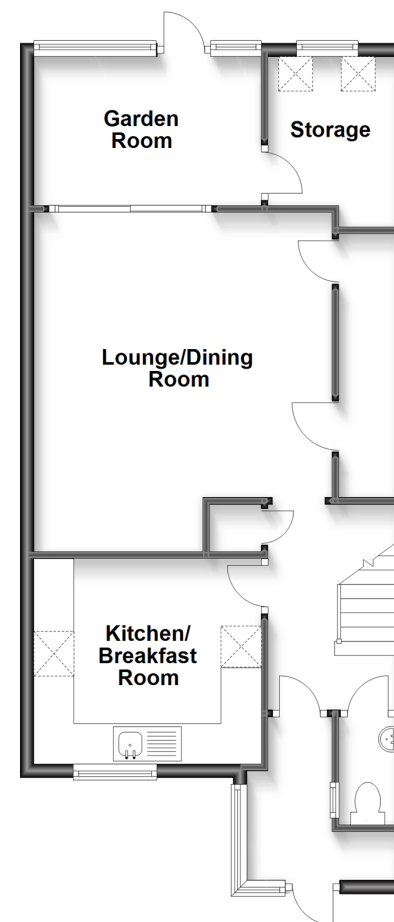
Bedroom 1: 14'6 x 8'8 (4.42m x 2.64m)
Bedroom 2: 14'9 x 10'1 (4.50m x 3.08m)
Bedroom 3: 8'7 x 8'6 (2.62m x 2.59m)
Bathroom

OUTSIDE

Front Garden
Rear Garden
Communal Parking

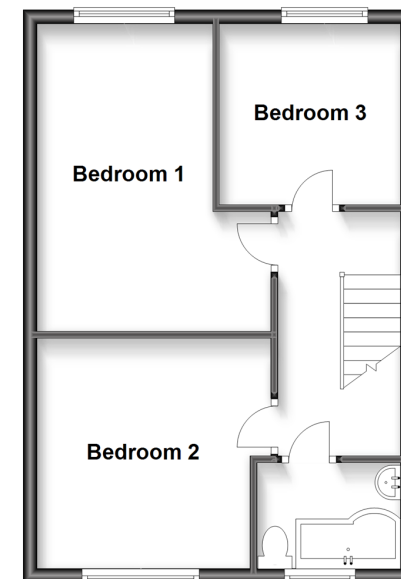
Ground Floor

Approx. 58.7 sq. metres (631.5 sq. feet)



First Floor

Approx. 43.8 sq. metres (471.5 sq. feet)



Call Crawley - 01293 522233 ■ cubittandwest.co.uk

- Legal advice should be taken to verify fixtures/fittings, planning, alterations and/or lease details
- Appliances & services are untested, dimensions are approximate and floor plans are not to scale
- Through a Homewise Home For Life Plan people aged 60+ can secure this property for up to 59% less, by purchasing a Lifetime Lease.



20419120/20230117/SS/NH1