



Guide Price
£210,000

Leasehold

2x  1x  1x 

**Oakwood Court,
Crawley, West Sussex,
RH11**

OVER 60?

Secure this property
for up to **59% less!**

cubitt&west
Helping you move forwards



Main features

- Two double bedroom purpose built apartment
- Allocated parking
- Open plan living area
- Easy access to local shops, buses and motorway links
- Quiet residential area perfect for a first home or investment with long lease

Accommodation

FIRST FLOOR

Entrance hall

Kitchen/Lounge Area: 21'2 x 18'4
(6.46m x 5.59m)

Bedroom 1: 12'1 x 8'10 (3.69m x 2.69m)

Bedroom 2: 10'2 x 8'11 (3.10m x 2.72m)

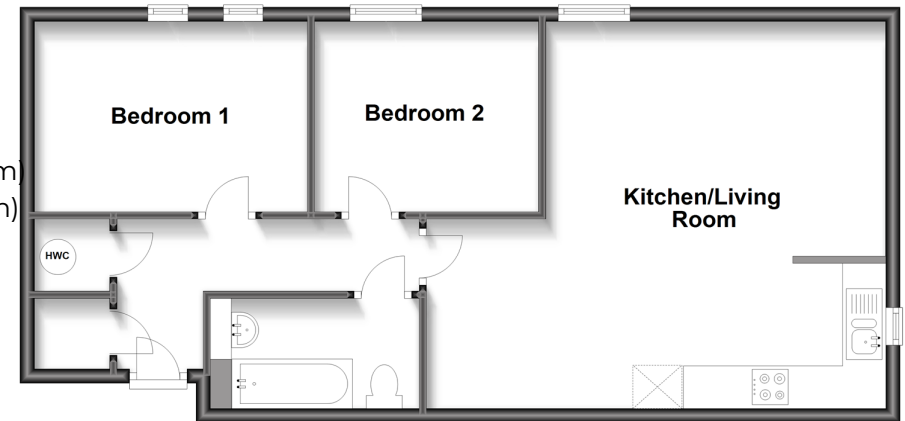
Bathroom

OUTSIDE

Allocated parking space

First Floor

Approx. 63.5 sq. metres (683.4 sq. feet)



Call Crawley - 01293 522233 ■ cubittandwest.co.uk

- Legal advice should be taken to verify fixtures/fittings, planning, alterations and/or lease details
- Appliances & services are untested, dimensions are approximate and floor plans are not to scale
- Through a Homewise Home For Life Plan people aged 60+ can secure this property for up to 59% less, by purchasing a Lifetime Lease.



20419123/20230119/DC/NH1