



Price

£200,000

Leasehold

1x  1x  1x 

**Morgan House, Trafalgar
Gardens, Three Bridges,
Crawley, West Sussex,
RH10**

OVER 60?

Secure this property
for up to **59% less!**



Video Tour available

cubitt&west
Helping you move forwards



Main features

- Ground floor apartment in gated development
- Long lease
- Close to train station, shops and town centre
- Chain free
- Private patio

Accommodation

GROUND FLOOR

Entrance hall

Lounge: 12'9 x 11'10 (3.89m x 3.61m)

Kitchen : 8'4 x 8'0 (2.54m x 2.44m)

Bedroom : 12'8 x 9'2 (3.86m x 2.80m)

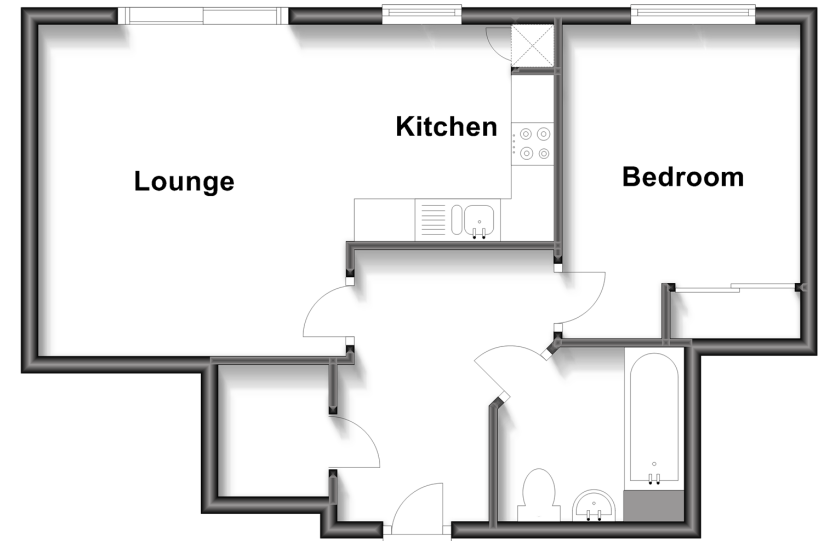
Bathroom : 7'2 x 6'8 (2.19m x 2.03m)

OUTSIDE

Allocated parking space

Ground Floor

Approx. 44.7 sq. metres (481.0 sq. feet)



Call Crawley - 01293 522233 ■ cubittandwest.co.uk

- Legal advice should be taken to verify fixtures/fittings, planning, alterations and/or lease details
- Appliances & services are untested, dimensions are approximate and floor plans are not to scale
- Through a Homewise Home For Life Plan people aged 60+ can secure this property for up to 59% less, by purchasing a Lifetime Lease.



20419146/20230114/KC/KC