



**OVER 60?**

Secure this property  
for up to **59% less!**

**Price**  
**£365,000**

**Freehold**

3x  1x  1x 

**Kirdford Close, Ifield,  
Crawley, West Sussex,  
RH11**

**cubitt&west**  
Helping you move forwards





## Main features

- Terraced house in popular Ifield
- Modern kitchen with utility area
- Being sold with no chain
- Patio doors opening out onto sunny rear garden
- Easy access to local shops, school and town centre and Ifield train station

## Accommodation

### GROUND FLOOR

Entrance Hall

Lounge : 11'9 x 10'11 (3.58m x 3.33m)

Dining Area: 9'11 x 9'1 (3.02m x 2.77m)

Kitchen : 10'4 x 9'0 (3.15m x 2.75m)

Utility Room: 5'5 x 4'11 (1.65m x 1.50m)

### FIRST FLOOR

Bedroom 1: 11'0 x 10'11 (3.36m x 3.33m)

Bedroom 2: 12'6 x 10'1 (3.81m x 3.08m)

Bedroom 3: 11'11 x 7'1 (3.63m x 2.16m)

Bathroom

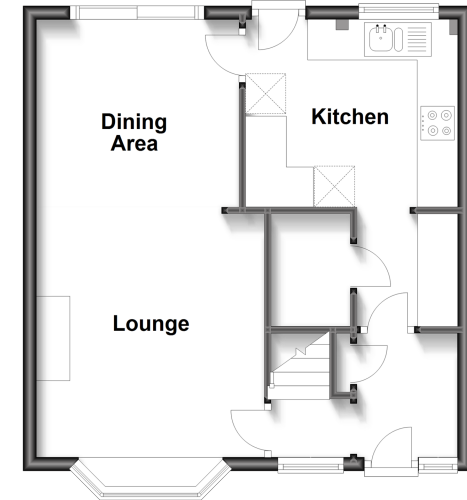
Outside

Front Garden

Rear Garden

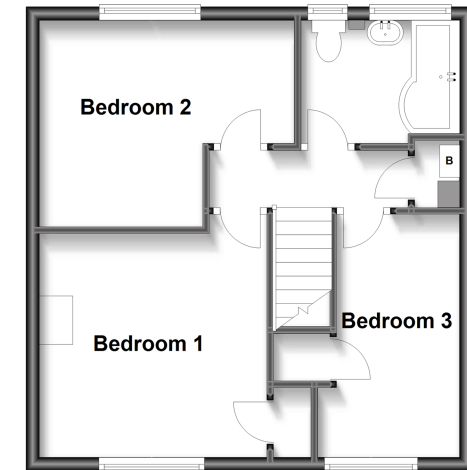
### Ground Floor

Approx. 41.1 sq. metres (441.9 sq. feet)



### First Floor

Approx. 40.8 sq. metres (439.2 sq. feet)



**Call Crawley - 01293 522233 ■ [cubittandwest.co.uk](http://cubittandwest.co.uk)**

- Legal advice should be taken to verify fixtures/fittings, planning, alterations and/or lease details
- Appliances & services are untested, dimensions are approximate and floor plans are not to scale
- Through a Homewise Home For Life Plan people aged 60+ can secure this property for up to 59% less, by purchasing a Lifetime Lease.



20419183/20230127/SS/NH1