



OVER 60?

Secure this property
for up to **59% less!**

Price

£450,000

Freehold

3x  2x  2x 

**Barber Close,
Maidenbower, Crawley,
West Sussex, RH10**

cubitt&west
Helping you move forwards



Main features

- No upper chain
- Link detached house
- Quiet cul de sac location
- Plenty of living space with lounge, separate dining area and conservatory
- En suite to bedroom one, family bathroom and cloakroom

Accommodation

GROUND FLOOR

Entrance Porch

Downstairs Cloakroom

Lounge: 15'8 (4.78m) narrowing to 12'11 (3.94m) x 15'8 (4.78m)

Kitchen/Breakfast Room: 15'8 x 8'4 (4.78m x 2.54m)

Dining Area: 8'4 x 8'0 (2.54m x 2.44m)

Conservatory: 9'5 x 8'1 (2.87m x 2.47m)

FIRST FLOOR

Landing

Bedroom 1: 14'10 (4.52m) narrowing to 9'3 (2.82m) x 9'0 (2.75m)

En-Suite Shower Area

Bedroom 2: 9'6 x 9'0 (2.90m x 2.75m)

Bedroom 3: 8'7 x 6'5 (2.62m x 1.96m)

Bathroom: 6'5 x 5'6 (1.96m x 1.68m)

OUTSIDE

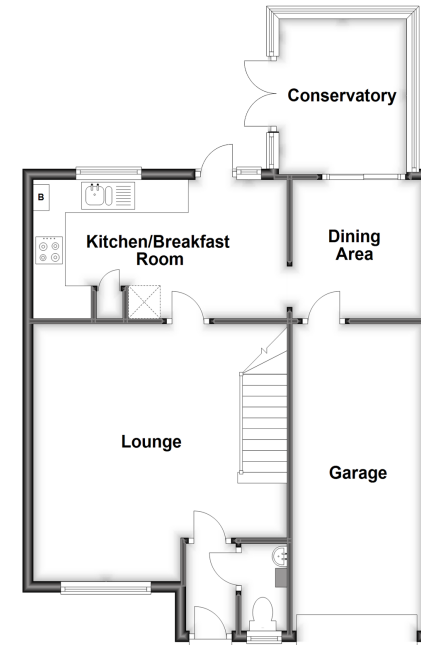
Front Garden

Rear Garden

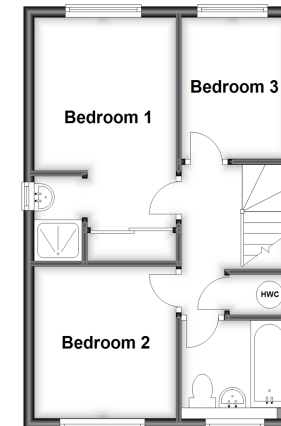
Driveway

Garage

Ground Floor
Approx. 65.0 sq. metres (699.9 sq. feet)



First Floor
Approx. 35.9 sq. metres (386.8 sq. feet)



Call Crawley - 01293 522233 ■ cubittandwest.co.uk

- Legal advice should be taken to verify fixtures/fittings, planning, alterations and/or lease details
- Appliances & services are untested, dimensions are approximate and floor plans are not to scale
- Through a Homewise Home For Life Plan people aged 60+ can secure this property for up to 59% less, by purchasing a Lifetime Lease.



20419231/20230524/DC/DC