



Guide Price
£730,000

Freehold

4x  2x  3x 

**Old Horsham Road,
Crawley, West Sussex,
RH11**

OVER 60?

Secure this property
for up to **59% less!**

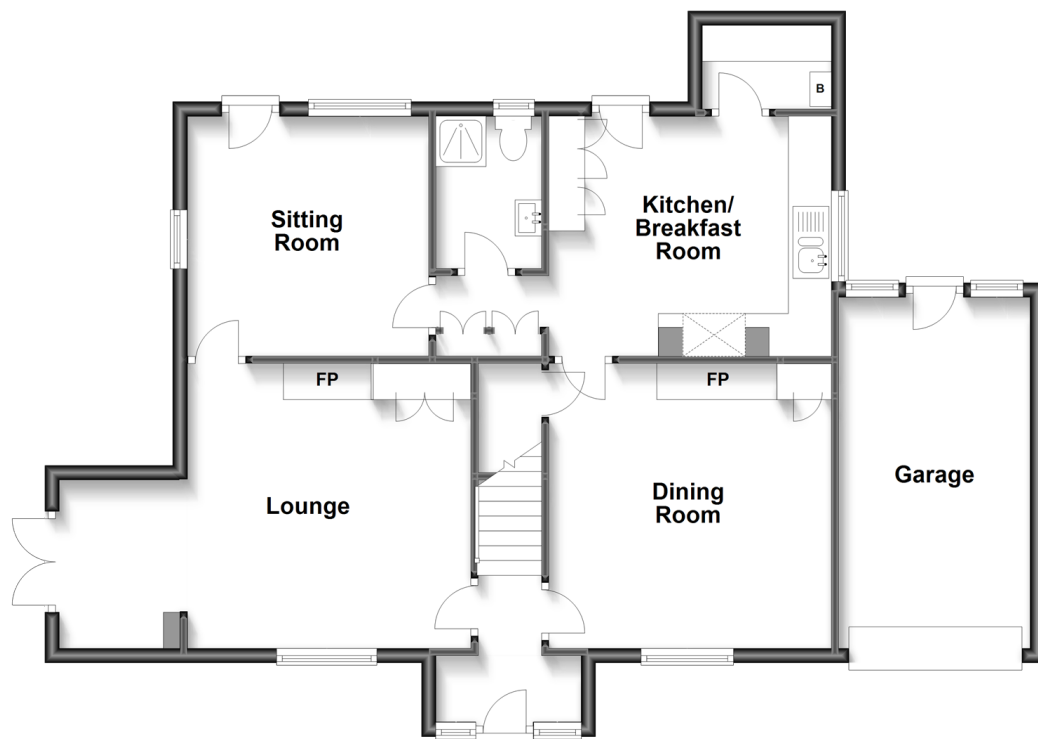


Video Tour available

cubitt&west
Helping you move forwards

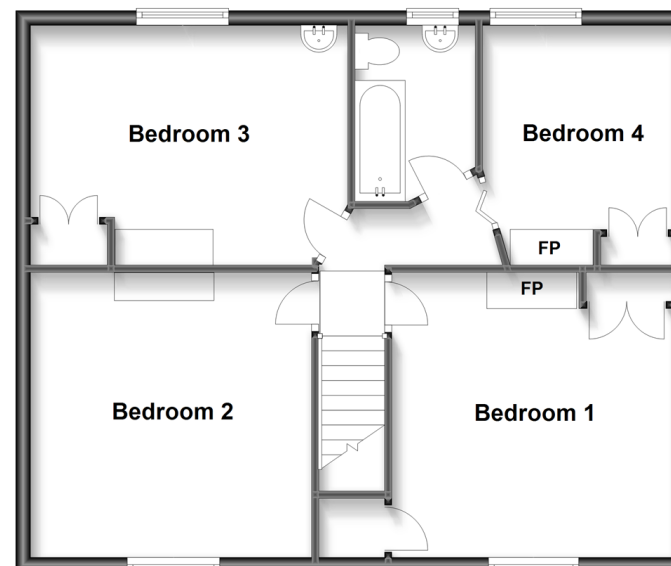
Ground Floor

Approx. 88.2 sq. metres (949.8 sq. feet)



First Floor

Approx. 66.2 sq. metres (713.0 sq. feet)



Accommodation

GROUND FLOOR

Entrance Porch: 6'7 x 3'7 (2.01m x 1.09m)
 Entrance Hall
 Lounge : 19'5 x 13'0 (5.92m x 3.97m)
 Snug room: 11'0 x 11'0 (3.36m x 3.36m)
 Shower Room
 Kitchen : 12'0 x 10'10 (3.66m x 3.30m)
 Dining Room: 12'10 x 12'10 (3.91m x 3.91m)

FIRST FLOOR

Landing
 Bedroom 1: 12'11 x 12'10 (3.94m x 3.91m)
 Bedroom 2: 13'0 x 12'11 (3.97m x 3.94m)
 Bedroom 3: 14'7 x 10'11 (4.45m x 3.33m)
 Bedroom 4: 9'9 x 8'11 (2.97m x 2.72m)
 Bathroom: 7'10 x 5'6 (2.39m x 1.68m)

OUTSIDE

Front Garden
 Rear Garden
 Garage: 16'11 x 7'11 (5.16m x 2.41m)
 Driveway



Main features

- Character property built in 1895
- Highly desirable location
- Living room featuring cosy eco-friendly log burner
- Family friendly home with 4 double bedrooms and 2 bathrooms
- Stone's throw away from Ofsted good rated schools, parks, town centre and train station



Nearest Schools

Primary Schools: Hilltop Primary 0.4 miles, Gossops Green Primary 0.5 miles, West Green Primary 0.5 miles

Secondary Schools: St Wilfrid's Catholic Comprehensive School, Crawley 0.0 miles, Holy Trinity CofE Secondary



Transport Information

Train Stations: Crawley 0.7 miles, Ifield 0.7 miles, Three Bridges 1.8 miles



Address

Old Horsham Road, Crawley, West Sussex, RH11



Directions

For directions to this property please contact us.



cubitt&west
Helping you move forwards

Call Crawley Branch 01293 522233 ■ cubittandwest.co.uk



■ Legal advice should be taken to verify fixtures/fittings, planning, alterations and/or lease details ■ Appliances & services are untested, dimensions are approximate and floor plans are not to scale
■ Through a Homewise Home For Life Plan people aged 60+ can secure this property for up to 59% less, by purchasing a Lifetime Lease.



20419241/20230313/KC/KC