



OVER 60?

Secure this property
for up to **59% less!**

Price

£475,000

Freehold

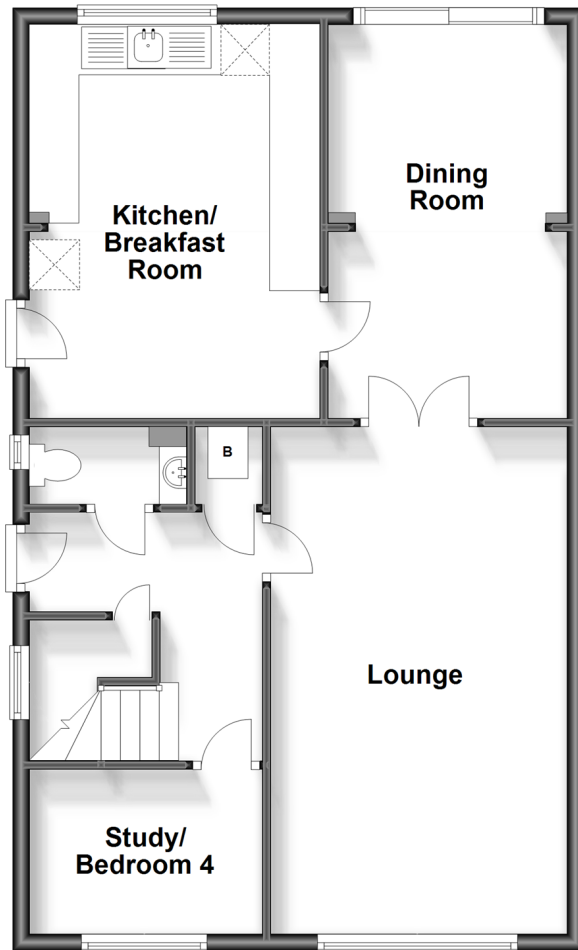
4x  1x  2x 

**St. Catherine's Road,
Pound Hill, Crawley,
West Sussex, RH10**

cubitt&west
Helping you move forwards

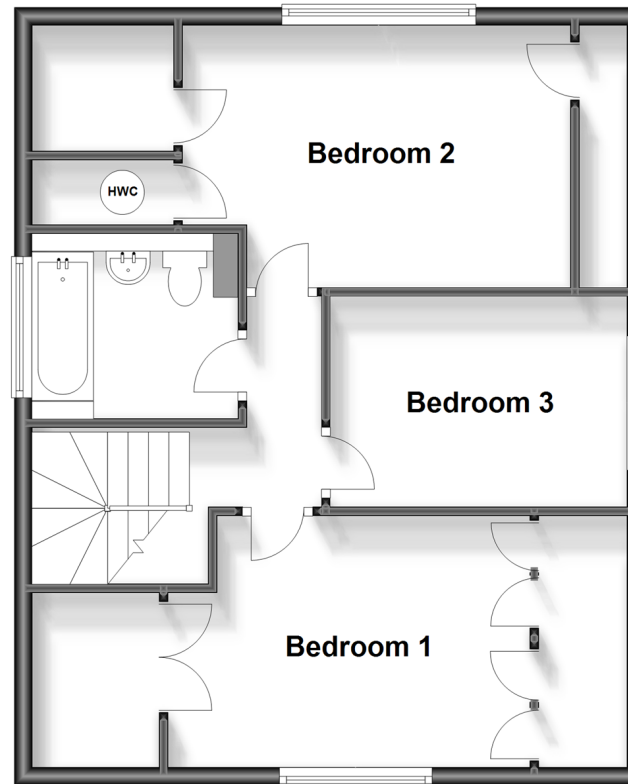
Ground Floor

Approx. 69.7 sq. metres (750.7 sq. feet)



First Floor

Approx. 56.7 sq. metres (610.6 sq. feet)



Accommodation

GROUND FLOOR

Entrance Hall

Lounge: 20'0 x 11'7 (6.10m x 3.53m)

Dining Room: 15'11 x 10'1 (4.85m x 3.08m)

Kitchen/Breakfast Room: 15'2 x 11'3 (4.63m x 3.43m)

Study/4th Bedroom: 9'11 x 6'5 (3.02m x 1.96m)

FIRST FLOOR

Landing

Bedroom 1: 13'5 x 9'3 (4.09m x 2.82m)

Bedroom 2: 14'6 x 9'10 (4.42m x 3.00m)

Bedroom 3: 11'1 x 7'7 (3.38m x 2.31m)

Bathroom

OUTSIDE

Front Garden

Rear Garden

Driveway

Garage

Total area: approx. 126.5 sq. metres (1361.3 sq. feet)



Main features

- Detached home in popular Pound Hill
- Tandem garage and driveway
- Extended ground floor so lots of lovely downstairs living space
- Great location close to great schools, Three Bridges Train station and local parks
- A home with huge potential



Nearest Schools

Primary Schools: Milton Mount Primary 0.3 miles, Pound Hill Junior School, Crawley 0.7 miles, Three Bridges Junior School 1.3 miles

Secondary Schools: Hazelwick School 0.8 miles, Oriel High



Transport Information

Train Stations: Three Bridges 0.9 miles, Gatwick Airport 1.9 miles, Crawley 2.0 miles



Address

St. Catherine's Road, Pound Hill, Crawley, West Sussex, RH10



Directions

For directions to this property please contact us.



cubitt&west
Helping you move forwards

Call Crawley Branch 01293 522233 ■ cubittandwest.co.uk



■ Legal advice should be taken to verify fixtures/fittings, planning, alterations and/or lease details ■ Appliances & services are untested, dimensions are approximate and floor plans are not to scale
■ Through a Homewise Home For Life Plan people aged 60+ can secure this property for up to 59% less, by purchasing a Lifetime Lease.



20419263/20230909/SS/NH1