



Guide Price
£420,000

Leasehold

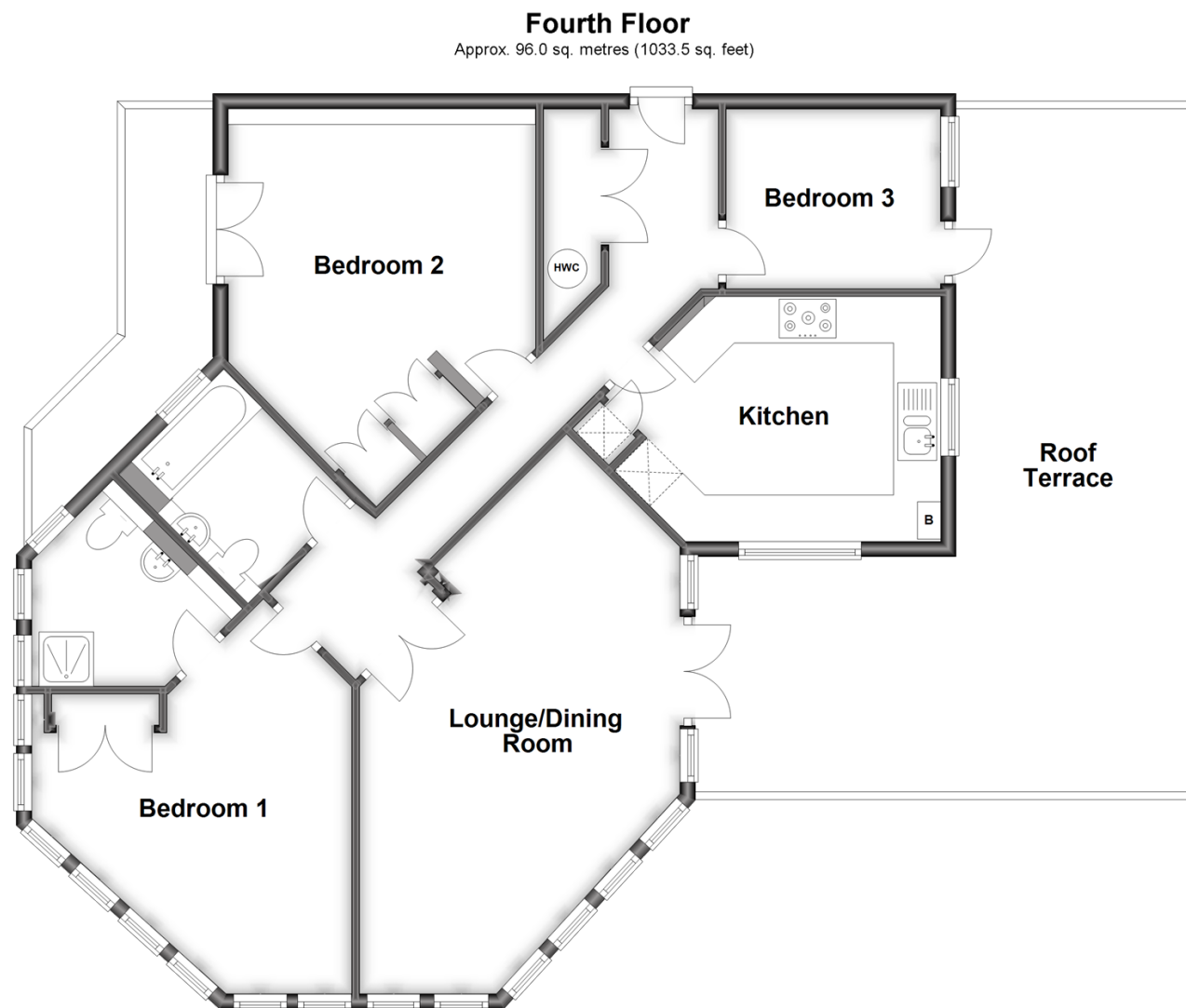
3x  2x  1x 

**The Pines, Turners Hill
Road, Pound Hill,
Crawley, West Sussex,
RH10**

OVER 60?

Secure this property
for up to **59% less!**

cubitt&west
Helping you move forwards



Accommodation

FOURTH FLOOR

Entrance Hall

Lounge/Dining Room: 25'6 x 13'11 (7.78m x 4.24m)

Roof Terrace

Kitchen : 15'9 x 10'6 (4.80m x 3.20m)

Bedroom 1: 17'7 (5.36m) x 13'9 (4.19m)
narrowing to 7'11 (2.41m)

En Suite Shower Room: 9'3 x 7'8 (2.82m x 2.34m)

Bedroom 2: 17'4 maximum x 12'7 (5.29m x 3.84m)

Balcony

Bedroom 3: 9'0 x 7'7 (2.75m x 2.31m)

Bathroom: 7'9 x 5'6 (2.36m x 1.68m)

OUTSIDE

Two covered Parking Spaces

Communal Garden



Main features

- **Luxury Penthouse apartment with private lift access**
- **Two covered and secure parking spaces**
- **Fitted kitchen with integrated appliances**
- **Bedroom one with en suite shower room and separate bathroom**
- **Large roof terrace and separate balcony with reaching views**



Nearest Schools

Primary Schools: Pound Hill Junior School, Crawley 0.3 miles, Maidenbower Junior School 0.6 miles, Milton Mount Primary 0.7 miles

Secondary Schools: Oriel High School 0.9 miles, Hazelwick



Transport Information

Train Stations: Three Bridges 0.6 miles, Crawley 1.7 miles, Gatwick Airport 2.8 miles



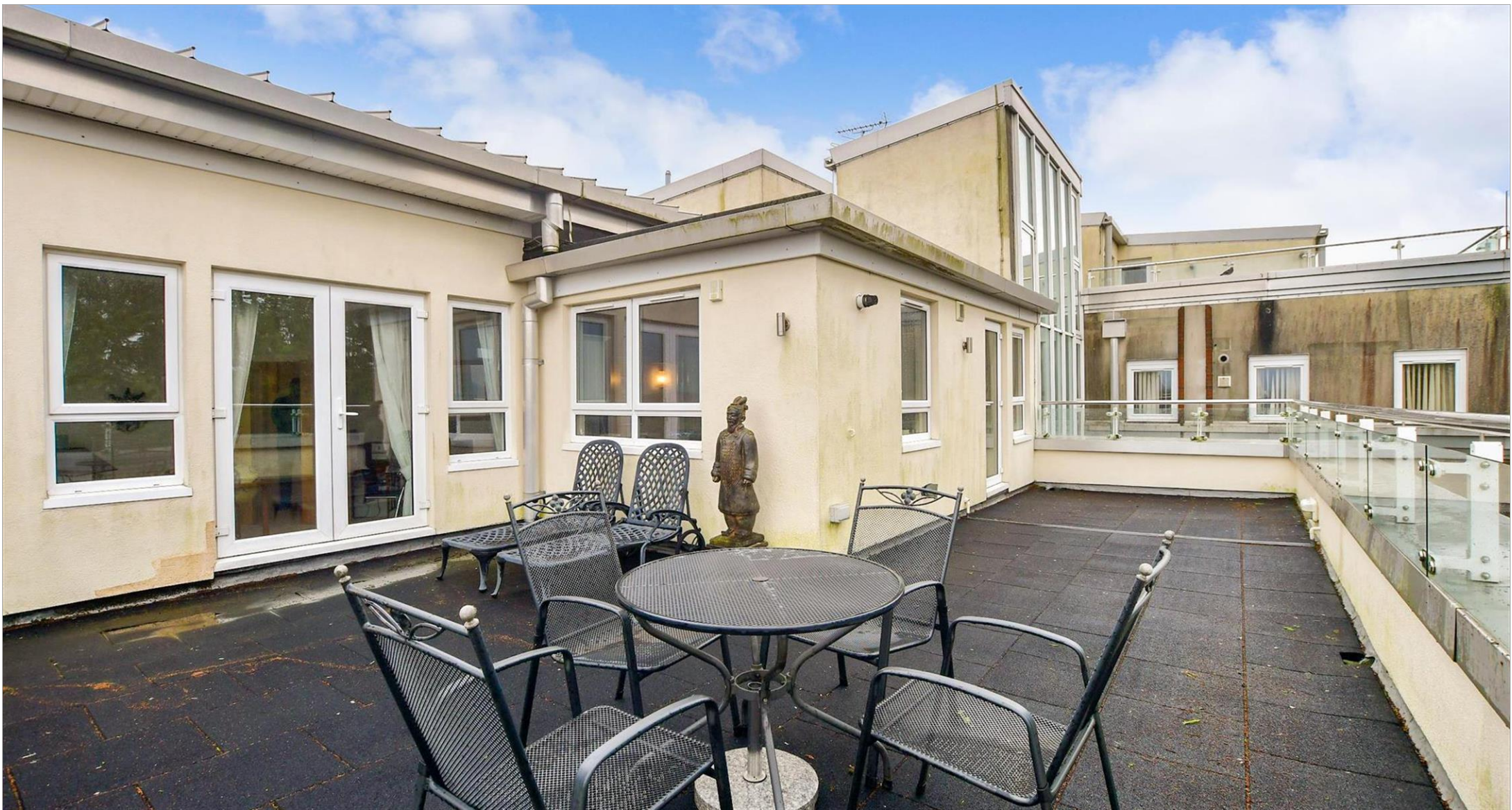
Address

The Pines, Turners Hill Road, Pound Hill, Crawley, West Sussex, RH10



Directions

For directions to this property please contact us.



cubitt&west
Helping you move forwards

Call Crawley Branch 01293 522233 ■ cubittandwest.co.uk



■ Legal advice should be taken to verify fixtures/fittings, planning, alterations and/or lease details ■ Appliances & services are untested, dimensions are approximate and floor plans are not to scale
■ Through a Homewise Home For Life Plan people aged 60+ can secure this property for up to 59% less, by purchasing a Lifetime Lease.



20419292/20230512/KC/DC