



Price
£440,000

Freehold

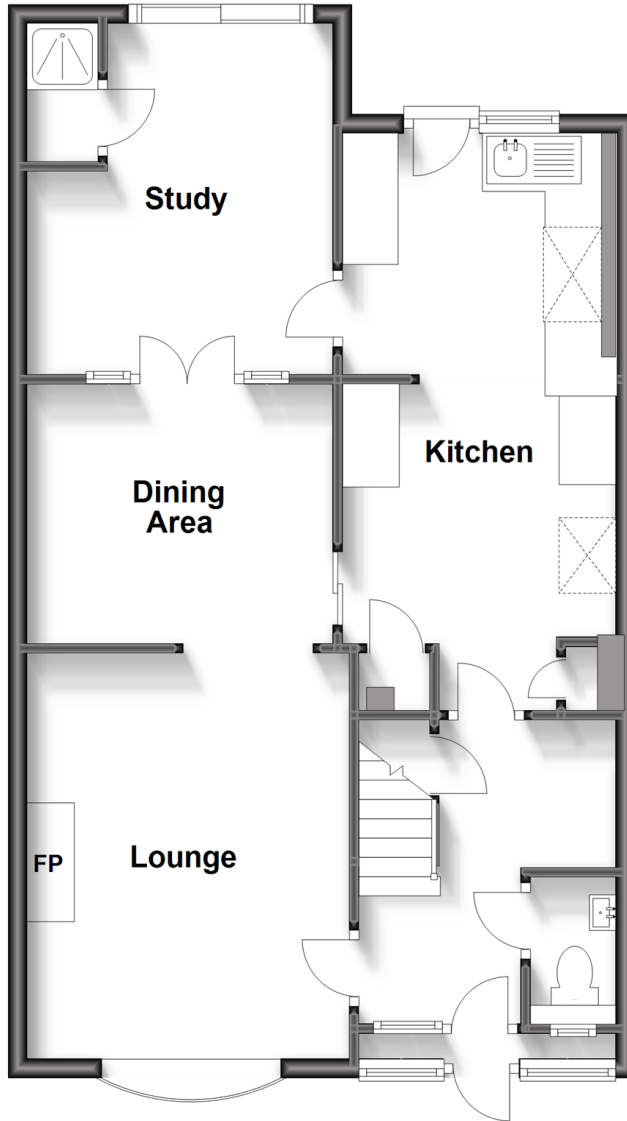
3x  2x  3x 

**Doncaster Walk,
Furnace Green, Crawley,
West Sussex, RH10**

cubitt&west
Helping you move forwards

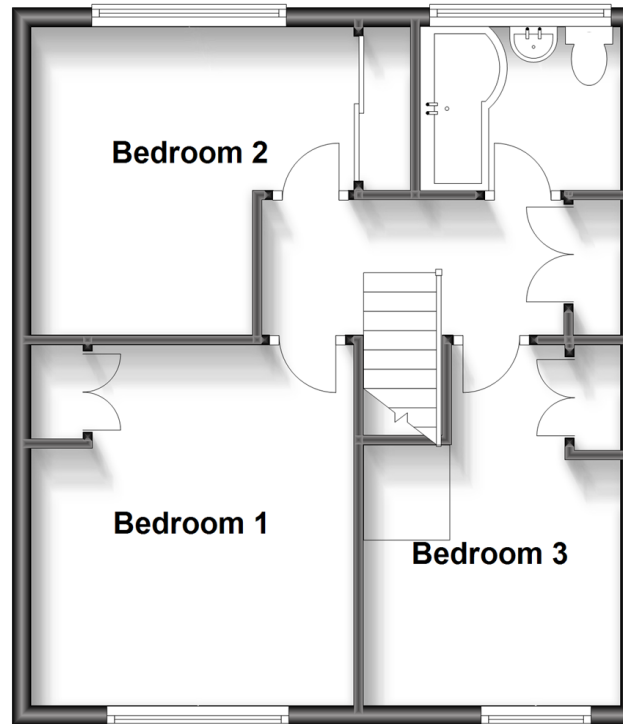
Ground Floor

Approx. 64.6 sq. metres (695.5 sq. feet)



First Floor

Approx. 44.5 sq. metres (479.0 sq. feet)



Accommodation

GROUND FLOOR

Entrance Porch

Entrance Hall

Downstairs Cloakroom

Lounge: 14'1 x 11'2 (4.30m x 3.41m)

Kitchen: 19'10 x 9'5 (6.05m x 2.87m)

Dining Area: 12'1 (3.69m) x 10'7 (3.23m)
narrowing to 7'8 (2.34m)

Shower Room

Study: 10'9 x 8'11 (3.28m x 2.72m)

FIRST FLOOR

Landing

Bedroom 1: 12'6 x 11'2 (3.81m x 3.41m)

Bedroom 2: 11'3 x 7'7 (3.43m x 2.31m)
narrowing to 10'8 x 5'9 (3.25m x 1.75m)

Bedroom 3: 12'5 x 9'1 (3.79m x 2.77m)

Bathroom

OUTSIDE

Front Garden

Rear Garden

Driveway

Garage : 21'1 x 9'1 (6.43m x 2.77m)



Main features

- Extended and improved end of terraced home
- Quiet walkway location
- Garage and parking at the rear of the property
- Refitted family bathroom. Ground floor shower room and cloakroom
- Short walk to local shops, schools and public transport



Nearest Schools

Primary Schools: St Andrew's CofE Primary 0.2 miles, Oaks Primary, The 0.2 miles, St Francis of Assisi Catholic Primary, Crawley 0.5 miles

Secondary Schools: Oriel High School 0.6 miles, Thomas



Transport Information

Train Stations: Crawley 0.7 miles, Three Bridges 0.9 miles, Ifield 2.0 miles



Address

Doncaster Walk, Furnace Green, Crawley, West Sussex, RH10



Directions

For directions to this property please contact us.



cubitt&west
Helping you move forwards

Call Crawley Branch 01293 522233 ■ cubittandwest.co.uk



■ Legal advice should be taken to verify fixtures/fittings, planning, alterations and/or lease details ■ Appliances & services are untested, dimensions are approximate and floor plans are not to scale



20419379/20230610/SS/DC