



**OVER 60?**

Secure this property  
for up to **59% less!**

**Price**

**£300,000**

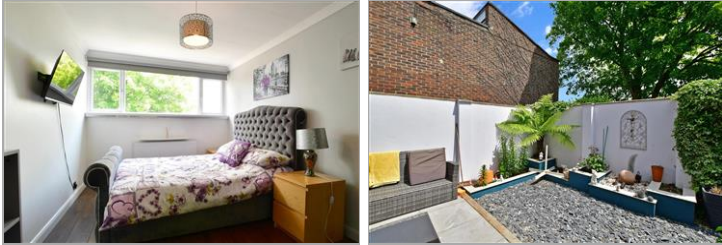
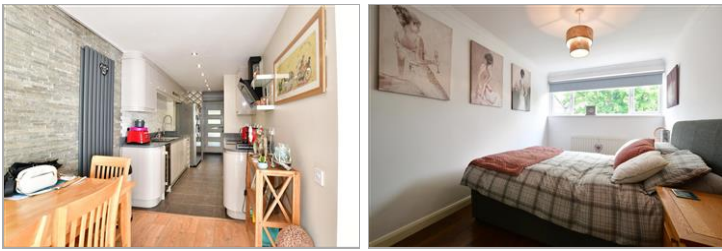
**Leasehold**

2x  1x  1x 

**Turnpike Place, Crawley,  
West Sussex, RH11**

**cubitt&west**  
Helping you move forwards





## Main features

- Immaculately presented property
- 2 large double bedrooms both with built in wardrobes
- Off road parking/driveway for 2 cars
- A lovely courtyard style garden with further communal gardens behind
- Within walking distance to town centre/shops and links to Gatwick

## Accommodation

### GROUND FLOOR

Entrance Hall

Lounge: 14'8 9 x 9'8 (4.47m x 2.95m)

Kitchen/Dining Area: 23'7 x 6'10 (7.19m x 2.08m)

### FIRST FLOOR

Landing

Bedroom 1: 14'0 x 8'10 (4.27m x 2.69m)

Bedroom 2: 14'0 x 8'9 (4.27m x 2.67m)

Bathroom

### OUTSIDE

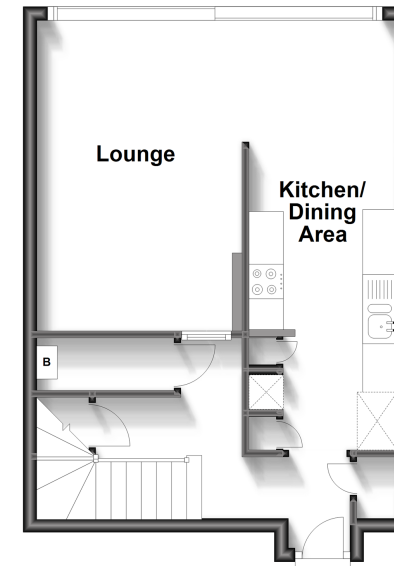
Private Courtyard

Communal Gardens

Two allocated parking spaces

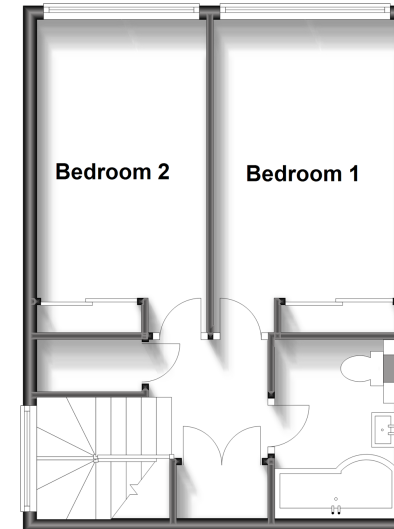
### Ground Floor

Approx. 38.2 sq. metres (410.8 sq. feet)



### First Floor

Approx. 37.8 sq. metres (406.7 sq. feet)



**Call Crawley - 01293 522233 ■ [cubittandwest.co.uk](http://cubittandwest.co.uk)**

- Legal advice should be taken to verify fixtures/fittings, planning, alterations and/or lease details
- Appliances & services are untested, dimensions are approximate and floor plans are not to scale
- Through a Homewise Home For Life Plan people aged 60+ can secure this property for up to 59% less, by purchasing a Lifetime Lease.



20419395/20230610/SI/SI