



**Price**

**£400,000**

**Freehold**

2x  1x  2x 

**Ifield Road, Crawley,  
West Sussex, RH11**

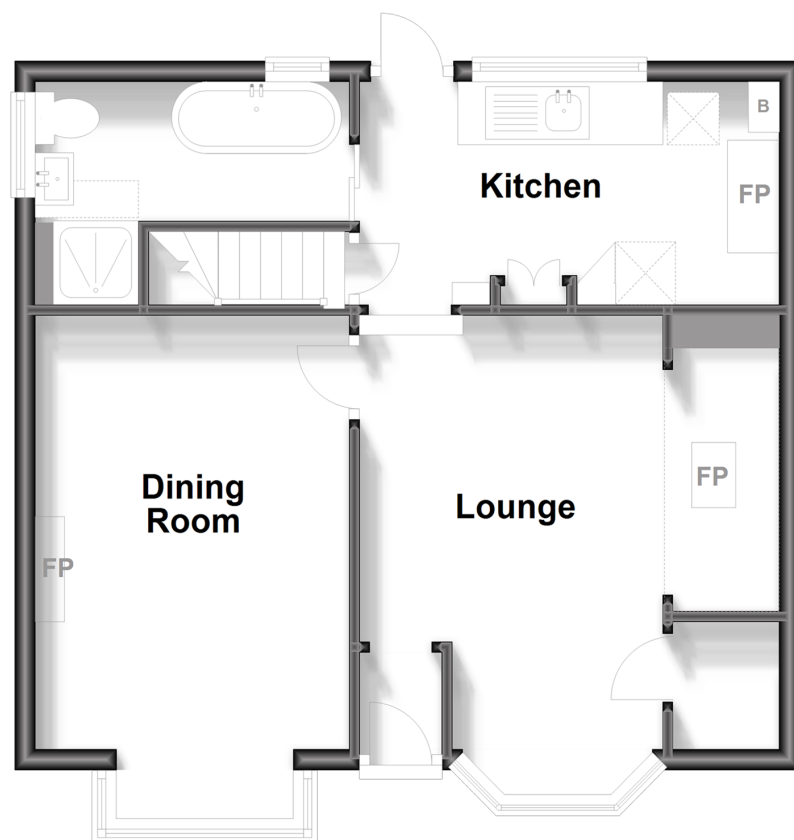
**OVER 60?**

Secure this property  
for up to **59% less!**

**cubitt&west**  
Helping you move forwards

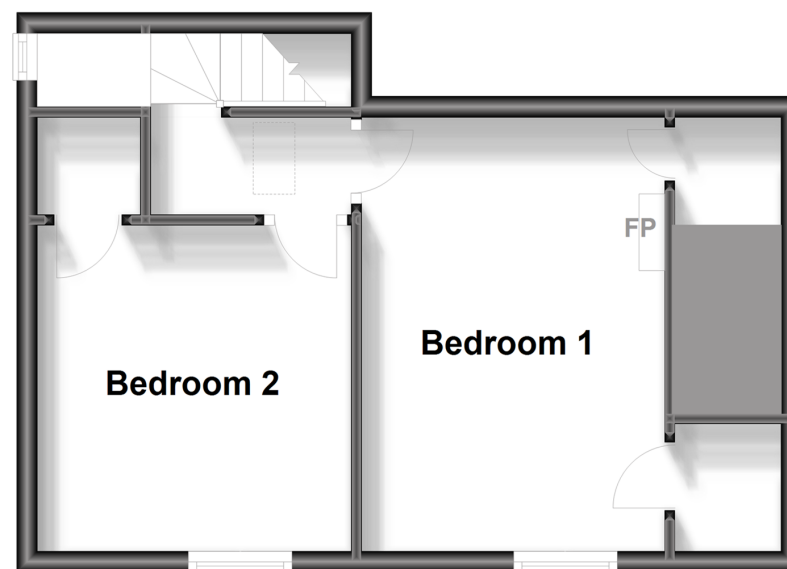
## Ground Floor

Approx. 46.9 sq. metres (504.4 sq. feet)



## First Floor

Approx. 32.1 sq. metres (345.4 sq. feet)



## Accommodation

### GROUND FLOOR

Entrance Hall

Lounge: 15'8 (4.78m) x 12'11 (3.94m) narrowing to 9'9 (2.97m)

Dining Room: 15'11 x 9'11 (4.85m x 3.02m)

Kitchen: 13'10 x 7'7 (4.22m x 2.31m)

Bathroom: 9'3 x 4'5 (2.82m x 1.35m)

### FIRST FLOOR

Landing

Bedroom 1: 13'5 x 9'6 (4.09m x 2.90m)

Bedroom 2: 10'2 x 10'1 (3.10m x 3.08m)

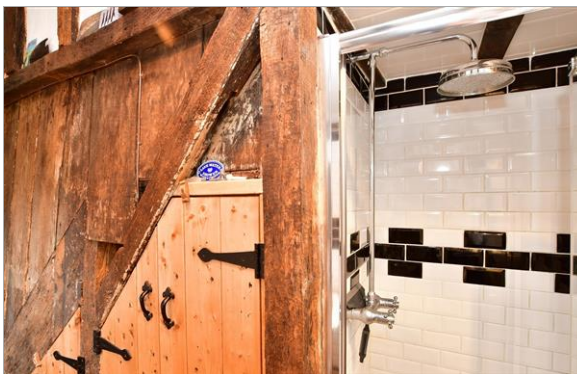
### OUTSIDE

Driveway

Rear Garden

Timber Garden Shed: 13'2 x 8'6 (4.02m x 2.59m)

Outside WC



## Main features

- Grade II listed detached home
- Off road parking
- Town centre location
- Wealth of character features including an Inglenook Fireplace, exposed wooden beams and vaulted ceilings
- Sympathetically refurbished and upgraded throughout including underfloor heating



### Nearest Schools

Primary Schools: West Green Primary 0.3 miles, St Francis of Assisi Catholic Primary, Crawley 0.5 miles, Southgate Primary 0.5 miles

Secondary Schools: St Wilfrid's Catholic Comprehensive



### Transport Information

Train Stations: Crawley 0.2 miles, Ifield 1.0 miles, Three Bridges 1.3 miles



### Address

Ifield Road, Crawley, West Sussex, RH11



### Directions

For directions to this property please contact us.





**cubitt&west**  
Helping you move forwards

Call Crawley Branch 01293 522233 ■ [cubittandwest.co.uk](https://cubittandwest.co.uk)



■ If buying to let, the energy rating will need to be improved to at least 'E' rating before you can let the property  
■ Appliances & services are untested, dimensions are approximate and floor plans are not to scale

■ Legal advice should be taken to verify fixtures/fittings, planning, alterations and/or lease details  
■ Through a Homewise Home For Life Plan people aged 60+ can secure this property for up to 59% less, by purchasing a Lifetime Lease.

20419478/20240426/SS/DC