



OVER 60?

Secure this property
for up to **59% less!**

Price

£240,000

Leasehold

1x  1x  1x 

**Canterbury Road,
Crawley, West Sussex,
RH10**

cubitt&west
Helping you move forwards



Main features

- Large ground floor maisonette in a quiet cul de sac
- Well presented throughout
- Double glazing and radiator heating
- Re-fitted kitchen and a re fitted bathroom suite
- Good size secluded rear garden, with wooden decking and lawn

Accommodation

GROUND FLOOR

Entrance Hall

Lounge: 14'8 x 10'0 (4.47m x 3.05m)

Kitchen : 11'3 x 6'10 (3.43m x 2.08m)

Bedroom: 11'5 x 11'2 (3.48m x 3.41m)

Bathroom: 8'2 x 5'3 (2.49m x 1.60m)

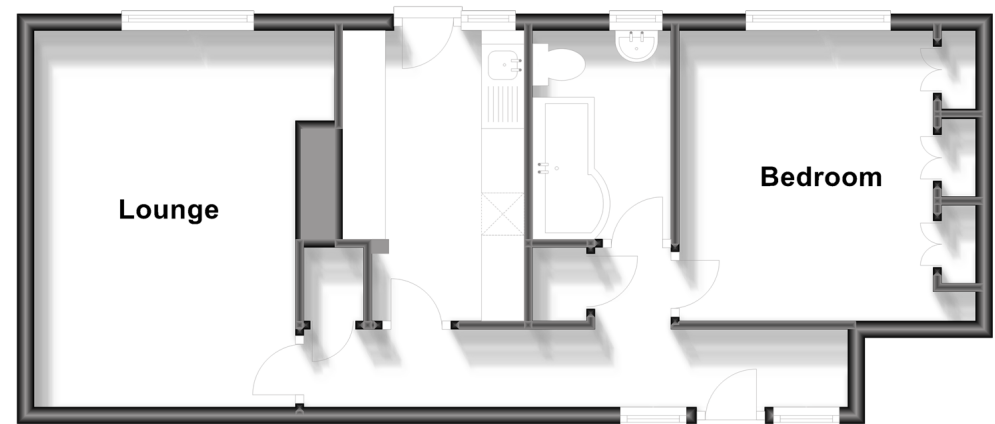
OUTSIDE

Rear Garden

Storage Cupboard: 6'11 x 4'8 (2.11m x 1.42m)

Ground Floor

Approx. 47.8 sq. metres (514.3 sq. feet)



Call Crawley - 01293 522233 ■ cubittandwest.co.uk

■ Legal advice should be taken to verify fixtures/fittings, planning, alterations and/or lease details
 ■ Through a Homewise Home For Life Plan people aged 60+ can secure this property for up to 59% less, by purchasing a Lifetime Lease.

■ Appliances & services are untested, dimensions are approximate and floor plans are not to scale