



Price

£800,000

Freehold

6x  4x  3x 

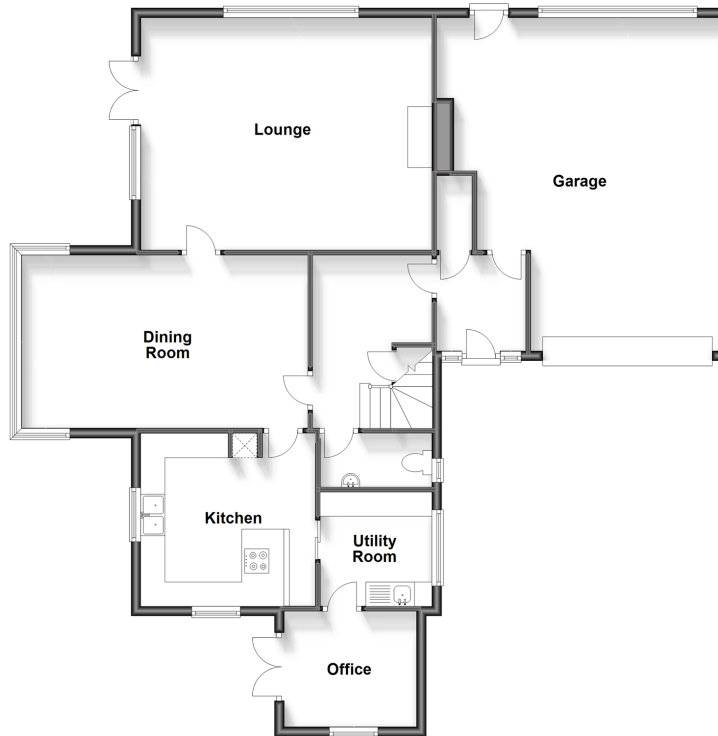
**Cobbett Close, Crawley,
West Sussex, RH10**

OVER 60?

Secure this property
for up to **59% less!**

cubitt&west
Helping you move forwards

Ground Floor
Approx. 129.0 sq. metres (1388.4 sq. feet)



First Floor
Approx. 125.1 sq. metres (1346.5 sq. feet)



Accommodation

GROUND FLOOR

Entrance Hall

Downstairs Cloakroom

Lounge: 19'0 x 15'7 (5.80m x 4.75m)

Dining Room: 19'0 x 15'0 (5.80m x 4.58m)

Kitchen: 11'0 x 11'0 (3.36m x 3.36m)

Utility Room: 7'0 x 7'0 (2.14m x 2.14m)

Office: 8'11 x 7'0 (2.72m x 2.14m)

Hallway: 11'0 x 8'0 (3.36m x 2.44m)

FIRST FLOOR

Landing

Bedroom 1: 20'0 x 11'7 (6.10m x 3.53m)

En Suite

Bedroom 2: 15'0 x 11'0 (4.58m x 3.36m)

Bedroom 3: 11'0 x 11'0 (3.36m x 3.36m)

Bedroom 4: 12'0 x 10'11 (3.66m x 3.33m)

En Suite : 7'0 x 7'0 (2.14m x 2.14m)

Bedroom 5: 15'11 x 13'0 (4.85m x 3.97m)

Bedroom 6: 11'0 x 7'0 (3.36m x 2.14m)

Bathroom

OUTSIDE

Garage

Front Garden

Rear Garden

Double Garage

Driveway



Main features

- One of the most desirable roads in the area
- Large detached 6 bedroom with 4 car driveway and double garage
- Secluded large garden
- Potential to improve and enhance this much loved family home
- Rarely available property



Nearest Schools

Primary Schools: Milton Mount Primary 0.2 miles, Pound Hill Junior School, Crawley 0.3 miles, Three Bridges Junior School 1.0 miles

Secondary Schools: Hazelwick School 0.6 miles, Oriel High



Transport Information

Train Stations: Three Bridges 0.5 miles, Crawley 1.6 miles, Gatwick Airport 2.2 miles



Address

Cobbett Close, Crawley, West Sussex, RH10



Directions

For directions to this property please contact us.



cubitt&west
Helping you move forwards

Call Crawley Branch 01293 522233 ■ cubittandwest.co.uk



■ Legal advice should be taken to verify fixtures/fittings, planning, alterations and/or lease details ■ Appliances & services are untested, dimensions are approximate and floor plans are not to scale
■ Through a Homewise Home For Life Plan people aged 60+ can secure this property for up to 59% less, by purchasing a Lifetime Lease.



20419552/20240417/SS/SI