



Price

£270,000

Leasehold

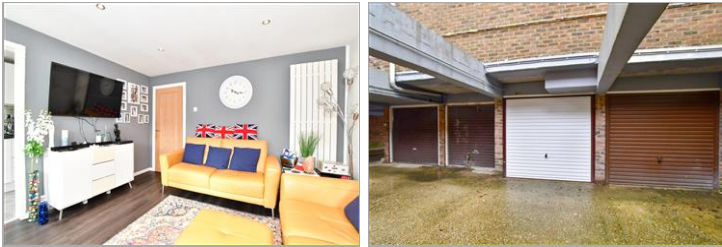
1x  1x  1x 

Charleston Court
Furnace Green,
Forestfield, Furnace
Green, Crawley, West

OVER 60?

Secure this property
for up to **59% less!**

cubitt&west
Helping you move forwards



Main features

- Detached Bungalow
- Garage en bloc
- Updated throughout
- Re-fitted kitchen and re fitted shower room with vaulted ceiling
- Located in a conservation area, just a short walk to Tilgate Park

Accommodation

GROUND FLOOR

Entrance Hall

Lounge: 13'11 x 12'0 (4.24m x 3.66m)

Kitchen : 13'10 x 5'3 (4.22m x 1.60m)

Shower Room: 8'7 x 5'4 (2.62m x 1.63m)

Bedroom : 13'1 (3.99m) x 11'7 (3.53m) narrowing to 8'8 (2.64m)

Store Room

OUTSIDE

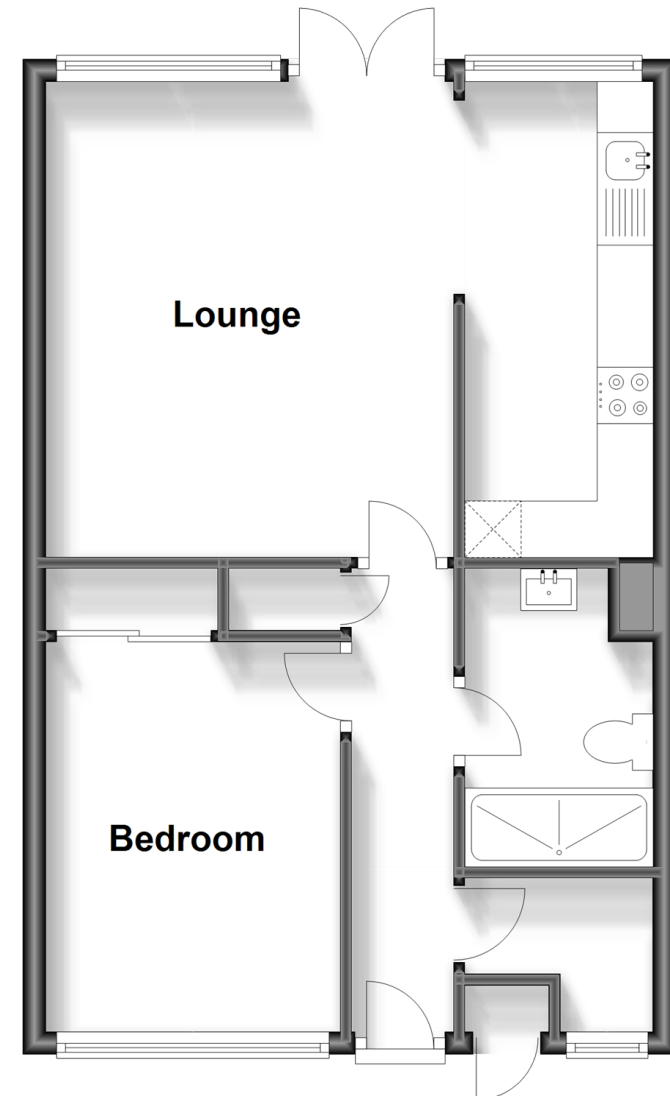
Front Garden

Rear Garden

Garage

Ground Floor

Approx. 45.7 sq. metres (491.7 sq. feet)



Call Crawley - 01293 522233 ■ cubittandwest.co.uk

- Legal advice should be taken to verify fixtures/fittings, planning, alterations and/or lease details
- Appliances & services are untested, dimensions are approximate and floor plans are not to scale
- Through a Homewise Home For Life Plan people aged 60+ can secure this property for up to 59% less, by purchasing a Lifetime Lease.



20419582/20240111/SS/DC