



OVER 60?

Secure this property
for up to **59% less!**

Price

£500,000

Freehold

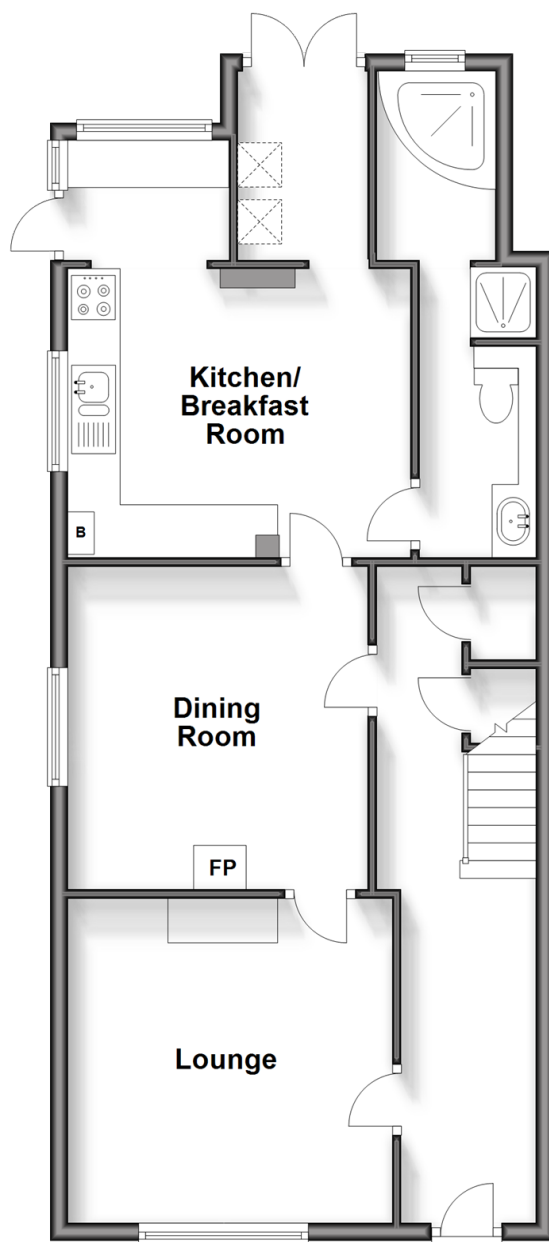
4x  2x  2x 

**Ifield Road, West Green,
Crawley, West Sussex,
RH11**

cubitt&west
Helping you move forwards

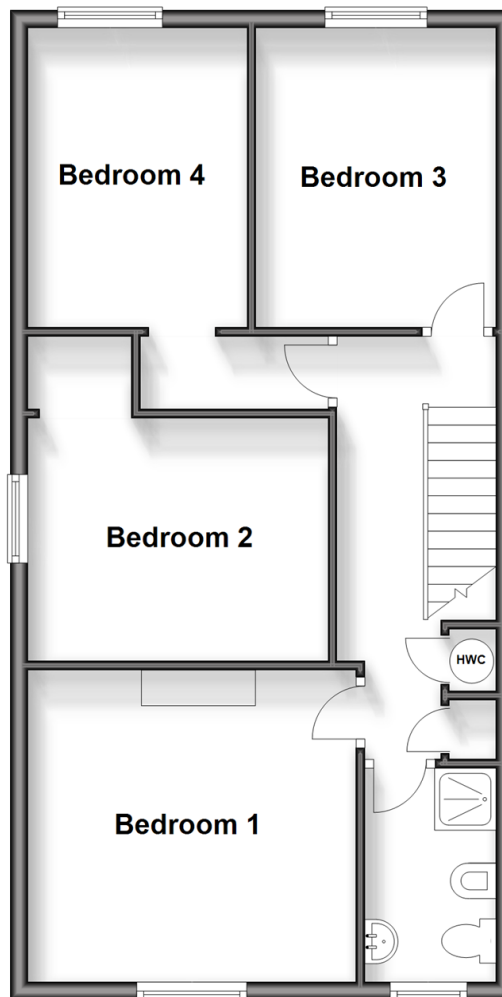
Split Level Ground Floor

Approx. 66.9 sq. metres (720.6 sq. feet)



Split Level First Floor

Approx. 57.6 sq. metres (619.7 sq. feet)



Accommodation

GROUND FLOOR

Entrance Hall

Lounge: 12'2 (3.71m) x 12'1 (3.69m)
narrowing to 11'0 (3.36m)

Dining Room: 12'0 x 11'1 (3.66m x 3.38m)

Kitchen/Breakfast Area: 15'10 (4.83m)
narrowing to 10'7 (3.23m) x 12'10 (3.91m)

Bathroom

FIRST FLOOR

Landing

Bedroom 1: 12'2 (3.71m) narrowing to 10'9 (3.28m) x 12'1 (3.69m)

Bedroom 2: 11'2 x 9'0 (3.41m x 2.75m)

Bedroom 3: 11'0 x 9'0 (3.36m x 2.75m)

Bedroom 4: 10'8 x 8'1 (3.25m x 2.47m)

Shower Room: 8'5 x 4'11 (2.57m x 1.50m)

OUTSIDE

Driveway

Rear Garden

Side Garden



Main features

- No upper chain
- Flexible accomodation with two reception rooms
- Ground floor bathroom and first floor shower room
- Just a short walk from Crawleys Town Centre and railway station
- Good size corner plot with gardens to the side and rear and off road parking



Nearest Schools

Primary Schools: West Green Primary 0.2 miles, St Margaret's CofE Primary 0.3 miles, Mill Primary, The 0.6 miles

Secondary Schools: Manor Green College 0.3 miles, St



Transport Information

Train Stations: Ifield 0.6 miles, Crawley 0.7 miles, Three Bridges 1.7 miles



Address

Ifield Road, West Green, Crawley, West Sussex, RH11



Directions

For directions to this property please contact us.



cubitt&west
Helping you move forwards

Call Crawley Branch 01293 522233 ■ cubittandwest.co.uk



- Legal advice should be taken to verify fixtures/fittings, planning, alterations and/or lease details
- Appliances & services are untested, dimensions are approximate and floor plans are not to scale
- Through a Homewise Home For Life Plan people aged 60+ can secure this property for up to 59% less, by purchasing a Lifetime Lease.



20419652/20240405/SS/DC