



OVER 60?

Secure this property
for up to **59% less!**

Price

£575,000

Freehold

4x  2x  2x 

**Tinsley Close, Three
Bridges, Crawley, West
Sussex, RH10**

cubitt&west
Helping you move forwards

Accommodation

GROUND FLOOR

Entrance Hall

Downstairs Cloakroom

Lounge/Dining Room: 25'7 x 15'1 (7.80m x 4.60m)

Family Room: 10'5 x 8'10 (3.18m x 2.69m)

Kitchen/Breakfast Room: 17'11 x 15'1 (5.46m x 4.60m) narrowing to 11'0 x 7'9 (3.36m x 2.36m)

FIRST FLOOR

Landing

Bedroom 1: 12'1 x 8'11 (3.69m x 2.72m)

En Suite Shower Room: 8'11 x 3'6 (2.72m x 1.07m)

Bedroom 2: 12'9 x 8'2 (3.89m x 2.49m)

Bedroom 3: 17'0 (5.19m) narrowing to 13'4 (4.07m) x 6'9 (2.06m)

Bedroom 4: 8'10 x 5'11 (2.69m x 1.80m)

Bathroom: 9'0 x 4'10 (2.75m x 1.47m)

OUTSIDE

Front Garden

Rear Garden

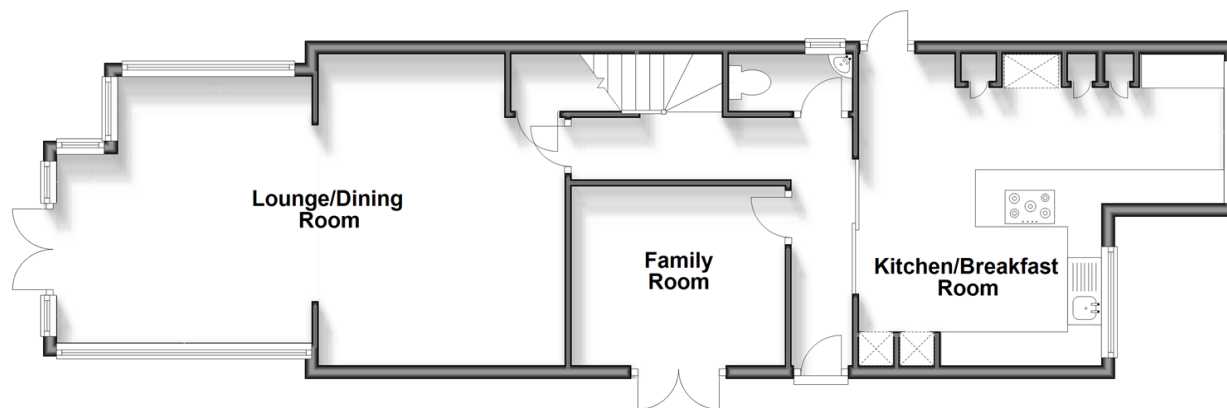
Gym: 13'5 x 9'5 (4.09m x 2.87m)

Workshop: 15'8 x 7'10 (4.78m x 2.39m)

Driveway

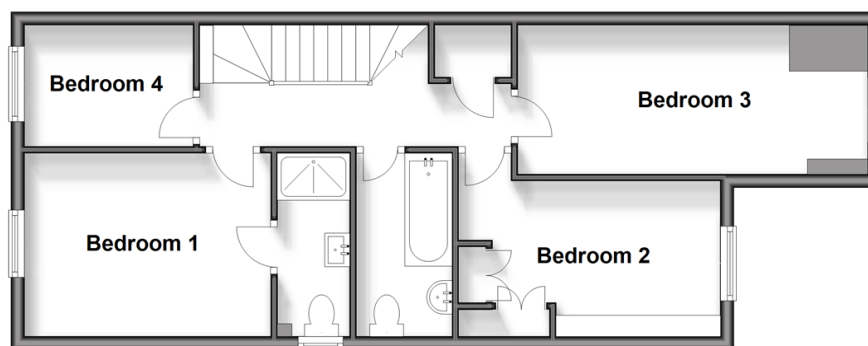
Ground Floor

Approx. 71.9 sq. metres (773.5 sq. feet)



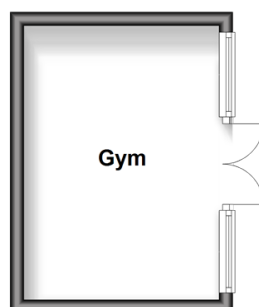
First Floor

Approx. 52.0 sq. metres (559.4 sq. feet)



Outbuilding

Approx. 11.8 sq. metres (127.0 sq. feet)





Main features

- Detached house in a quiet cul de sac
- Luxury re-fitted kitchen/breakfast room with central island
- Extended lounge diner and separate family room
- En suite shower room, family room and downstairs cloakroom
- Larger than average rear garden with gym and workshop



Nearest Schools

Primary Schools: Milton Mount Primary 0.5 miles, Three Bridges Junior School 0.7 miles, Northgate Primary 0.7 miles

Secondary Schools: Hazelwick School 0.1 miles, Oriel High



Transport Information

Train Stations: Three Bridges 0.6 miles, Crawley 1.3 miles, Gatwick Airport 1.9 miles



Address

Tinsley Close, Three Bridges, Crawley, West Sussex, RH10



Directions

For directions to this property please contact us.



cubitt&west
Helping you move forwards

Call Crawley Branch 01293 522233 ■ cubittandwest.co.uk



■ Legal advice should be taken to verify fixtures/fittings, planning, alterations and/or lease details ■ Appliances & services are untested, dimensions are approximate and floor plans are not to scale
■ Through a Homewise Home For Life Plan people aged 60+ can secure this property for up to 59% less, by purchasing a Lifetime Lease.



20419695/20240513/SR2/DC