



Price
£250,000

Leasehold

2x  2x  1x 

**Geoffreys Lodge,
Tinsley Lane, Three
Bridges, Crawley, West
Sussex, RH10**

OVER 60?

Secure this property
for up to **59% less!**

cubitt&west
Helping you move forwards



Main features

- Purpose built apartment
- En suite shower room to primary bedroom
- Allocated parking with visitors space
- Open plan kitchen to dining and lounge area-perfect for social living
- Great location close to local shops, motorway access and Three Bridges Railway station

Accommodation

GROUND FLOOR

Entrance Hall

Kitchen: 9'5 x 6'8 (2.87m x 2.03m)

Lounge/Diner: 16'0 x 11'0 (4.88m x 3.36m)

Bedroom 1: 12'5 x 8'5 (3.79m x 2.57m)

En Suite Shower Room

Bedroom 2: 10'5 x 7'0 (3.18m x 2.14m)

Bathroom

OUTSIDE

One Allocated Parking Space

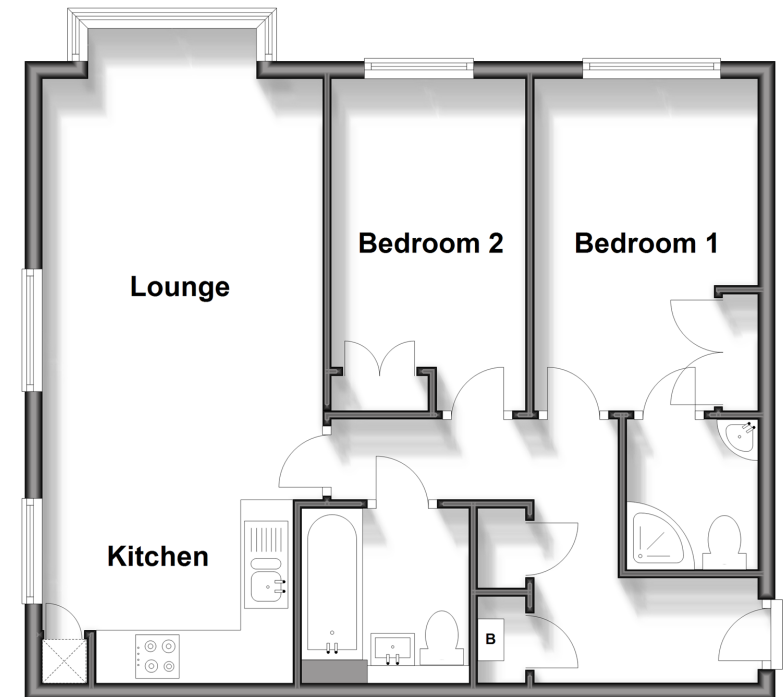
Visitors Space

Storage Shed

Communal Garden

Ground Floor

Approx. 58.0 sq. metres (624.4 sq. feet)



Call Crawley - 01293 522233 ■ cubittandwest.co.uk

- Legal advice should be taken to verify fixtures/fittings, planning, alterations and/or lease details
- Appliances & services are untested, dimensions are approximate and floor plans are not to scale
- Through a Homewise Home For Life Plan people aged 60+ can secure this property for up to 59% less, by purchasing a Lifetime Lease.



20419708/20240312/SS/NH1