



**OVER 60?**

Secure this property  
for up to **59% less!**

**Price**  
**£425,000**

**Freehold**

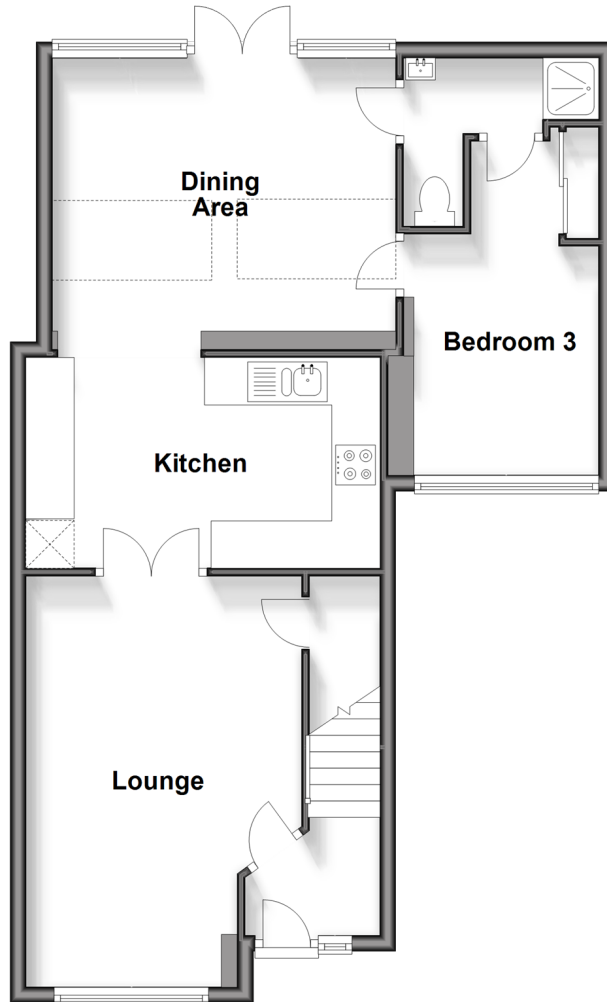
3x  3x  2x 

**Matthews Drive,  
Maidenbower, Crawley,  
West Sussex, RH10**

**cubitt&west**  
Helping you move forwards

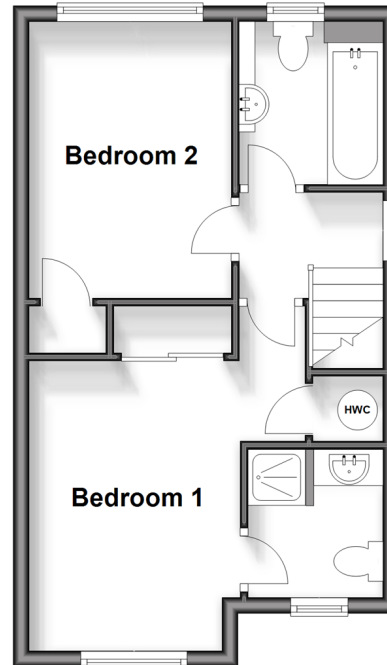
### Ground Floor

Approx. 63.9 sq. metres (688.2 sq. feet)



### First Floor

Approx. 33.8 sq. metres (364.3 sq. feet)



## Accommodation

### GROUND FLOOR

Entrance Hall

Lounge: 16'11 x 11'4 (5.16m x 3.46m)

Kitchen : 14'6 x 8'9 (4.42m x 2.67m)

Dining Area: 14'1 x 11'5 (4.30m x 3.48m)

Bedroom 3: 14'4 x 7'7 (4.37m x 2.31m)

En Suite Shower Room : 8'1 (2.47m) x 7'1 (2.16m) narrowing to 3'1 (0.94m)

### FIRST FLOOR

Landing

Bedroom 1: 12'1 (3.69m) x 11'6 (3.51m) narrowing to 8'9 (2.67m)

En Suite Shower Room: 6'1 x 5'7 (1.86m x 1.70m)

Bedroom 2: 11'4 x 8'4 (3.46m x 2.54m)

Bathroom: 6'8 x 6'1 (2.03m x 1.86m)

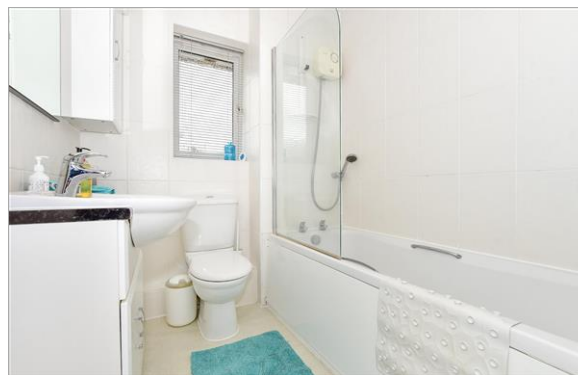
### OUTSIDE

Front Garden

Rear Garden

Driveway





## Main features

- Extended and improved semi detached house
- Re-fitted kitchen with integrate appliances
- Lounge and separate dining room/family room
- Both bedrooms 1and 2 have en suite shower rooms and there is a family bathroom
- Secluded rear garden and plenty of off road parking at the front



### Nearest Schools

Primary Schools: Maidenbower Junior School 0.8 miles, Oaks Primary, The 0.8 miles, St Andrew's CofE Primary 0.8 miles

Secondary Schools: Oriel High School 0.5 miles, Thomas



### Transport Information

Train Stations: Three Bridges 1.4 miles, Crawley 1.5 miles, Ifield 2.7 miles



### Address

Matthews Drive, Maidenbower, Crawley, West Sussex, RH10



### Directions

For directions to this property please contact us.





**cubitt&west**  
Helping you move forwards

Call Crawley Branch 01293 522233 ■ [cubittandwest.co.uk](https://cubittandwest.co.uk)



■ Legal advice should be taken to verify fixtures/fittings, planning, alterations and/or lease details ■ Appliances & services are untested, dimensions are approximate and floor plans are not to scale  
■ Through a Homewise Home For Life Plan people aged 60+ can secure this property for up to 59% less, by purchasing a Lifetime Lease.



20419719/20240327/SS/DC