



**Price**  
**£230,000**

**Freehold**

1x  1x  1x 

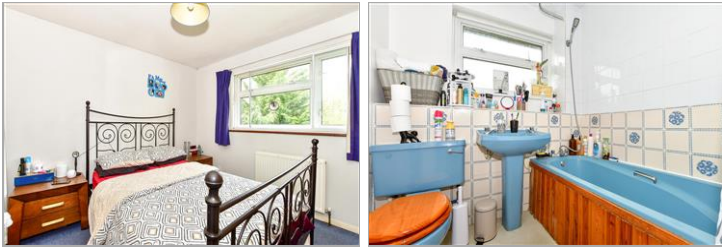
**Jersey Road,  
Cottesmore Green,  
Crawley, West Sussex,  
RH11**

**OVER 60?**

Secure this property  
for up to **59% less!**

**cubitt&west**  
Helping you move forwards





## Main features

- End of terraced house
- Allocated parking space adjacent to the property
- Cul de sac location
- Private enclosed rear garden with access from the lounge
- Double glazed windows and radiator central heating

## Accommodation

### GROUND FLOOR

Entrance Porch

Lounge Area: 13'3 x 11'5 (4.04m x 3.48m)

Kitchen Area: 13'4 x 5'2 (4.07m x 1.58m)

### FIRST FLOOR

Landing

Bedroom : 10'6 x 10'1 (3.20m x 3.08m)

Bathroom: 6'1 x 5'7 (1.86m x 1.70m)

### OUTSIDE

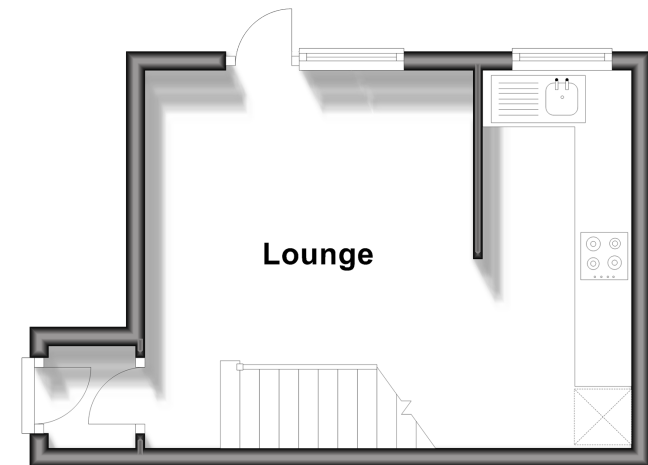
Front Garden

Rear Garden

Allocated Parking Space

## Ground Floor

Approx. 21.8 sq. metres (234.1 sq. feet)



## First Floor

Approx. 20.6 sq. metres (222.2 sq. feet)



**Call Crawley - 01293 522233 ■ [cubittandwest.co.uk](http://cubittandwest.co.uk)**

- Legal advice should be taken to verify fixtures/fittings, planning, alterations and/or lease details
- Appliances & services are untested, dimensions are approximate and floor plans are not to scale
- Through a Homewise Home For Life Plan people aged 60+ can secure this property for up to 59% less, by purchasing a Lifetime Lease.



20419770/20240422/SS/DC