



**Price**  
**£525,000**

**Freehold**

3x  1x  1x 

**Applefield, Crawley,  
West Sussex, RH10**

**OVER 60?**

Secure this property  
for up to **59% less!**

**cubitt&west**  
Helping you move forwards

## Accommodation

### GROUND FLOOR

Entrance Hall

Downstairs Cloakroom

Lounge: 24'9 x 11'8 (7.55m x 3.56m)

Kitchen : 11'9 x 9'8 (3.58m x 2.95m)

Utility Room: 7'11 x 5'11 (2.41m x 1.80m)

### FIRST FLOOR

Landing

Bedroom 1: 14'6 x 11'1 (4.42m x 3.38m)

Bedroom 2: 14'9 x 11'8 (4.50m x 3.56m)

Bedroom 3: 11'9 x 8'11 (3.58m x 2.72m)

Bathroom: 10'11 x 5'8 (3.33m x 1.73m)

### OUTSIDE

Front Garden

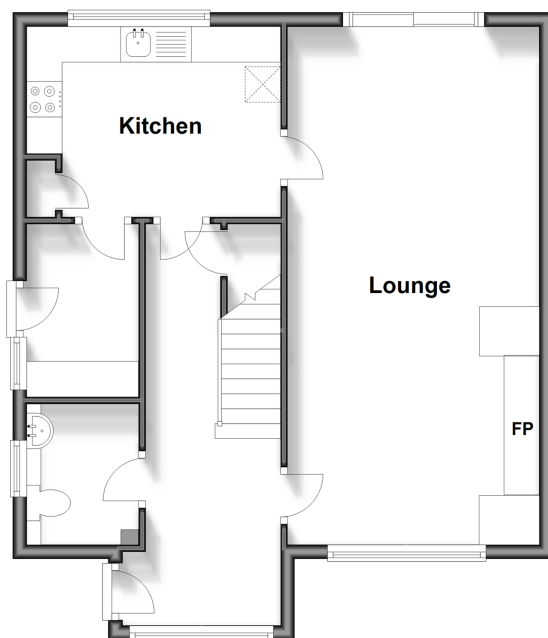
Rear Garden

Driveway

Garage

### Ground Floor

Approx. 55.4 sq. metres (595.8 sq. feet)



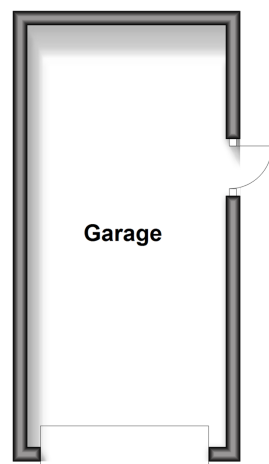
### First Floor

Approx. 52.0 sq. metres (560.0 sq. feet)



### Outbuilding

Approx. 16.7 sq. metres (179.3 sq. feet)







## Main features

- Sold with no chain
- Quiet cul de sac in central location
- Kitchen leading onto a utility room
- Large rear garden, garage and driveway
- Spacious living area looking out onto enclosed good size garden



### Nearest Schools

Primary Schools: Northgate Primary 0.2 miles, Three Bridges Junior School 0.4 miles, West Green Primary 0.5 miles

Secondary Schools: Hazelwick School 0.8 miles, Manor



### Transport Information

Train Stations: Crawley 0.5 miles, Three Bridges 1.0 miles, Ifield 1.3 miles



### Address

Applefield, Crawley, West Sussex, RH10



### Directions

For directions to this property please contact us.





**cubitt&west**  
Helping you move forwards

Call Crawley Branch 01293 522233 ■ [cubittandwest.co.uk](https://cubittandwest.co.uk)



■ Legal advice should be taken to verify fixtures/fittings, planning, alterations and/or lease details ■ Appliances & services are untested, dimensions are approximate and floor plans are not to scale  
■ Through a Homewise Home For Life Plan people aged 60+ can secure this property for up to 59% less, by purchasing a Lifetime Lease.



20419771/20240516/SR2/SR2