



**Price**  
**£270,000**

**Leasehold**

2x  2x  1x 

**Beverley Mews, Crawley,  
West Sussex, RH10**

**cubitt&west**  
Helping you move forwards



## Main features

- Ready to move straight into
- Second floor purpose built apartment
- Bedroom one re-fitted en suite shower room and re-fitted bathroom
- Luxury re-fitted kitchen with integrated appliances

## Accommodation

### SECOND FLOOR

Entrance Hall

Kitchen Area : 12'6 (3.81m) narrowing to 11'2 (3.41m) x 5'2 (1.58m)

Lounge/Dining Area : 16'9 x 10'10 (5.11m x 3.30m)

Bedroom 1: 14'10 x 9'0 (4.52m x 2.75m)

En Suite Shower Room : 6'2 x 5'6 (1.88m x 1.68m)

Bedroom 2: 11'6 (3.51m) narrowing to 10'9 (3.28m) x 9'2 (2.80m)

Bathroom : 6'6 x 5'7 (1.98m x 1.70m)

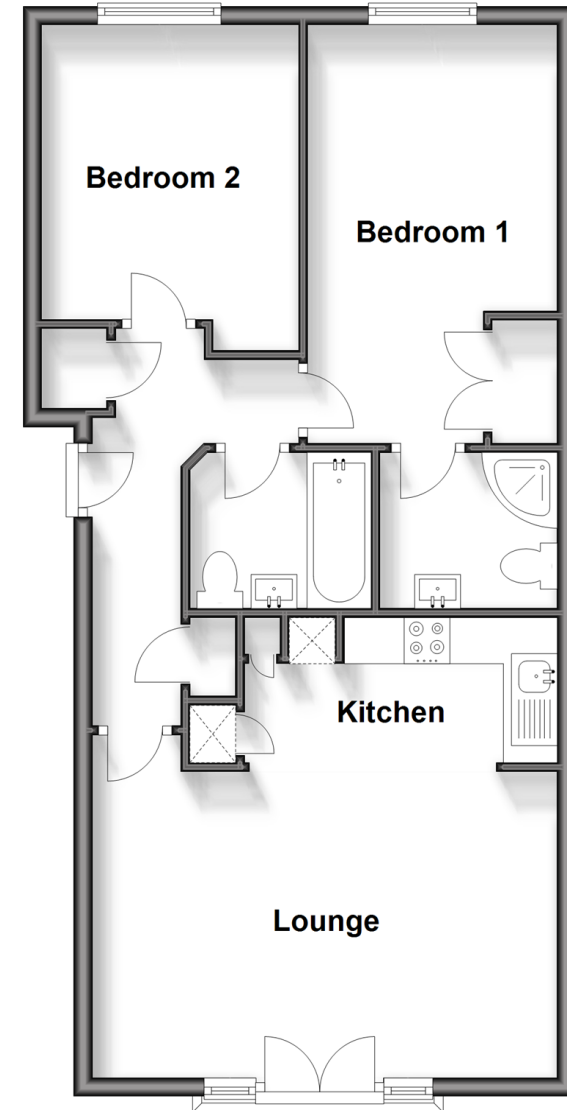
### OUTSIDE

One Allocated Parking Space

Communal Gardens

## Second Floor

Approx. 60.5 sq. metres (651.2 sq. feet)



**Call Crawley - 01293 522233 ■ [cubittandwest.co.uk](http://cubittandwest.co.uk)**

- Legal advice should be taken to verify fixtures/fittings, planning, alterations and/or lease details
- Appliances & services are untested, dimensions are approximate and floor plans are not to scale



20419790/20240514/SS/DC