



Price
£275,000

Leasehold

2x  1x  2x 

**Turnpike Place, Langley
Green, Crawley, West
Sussex, RH11**

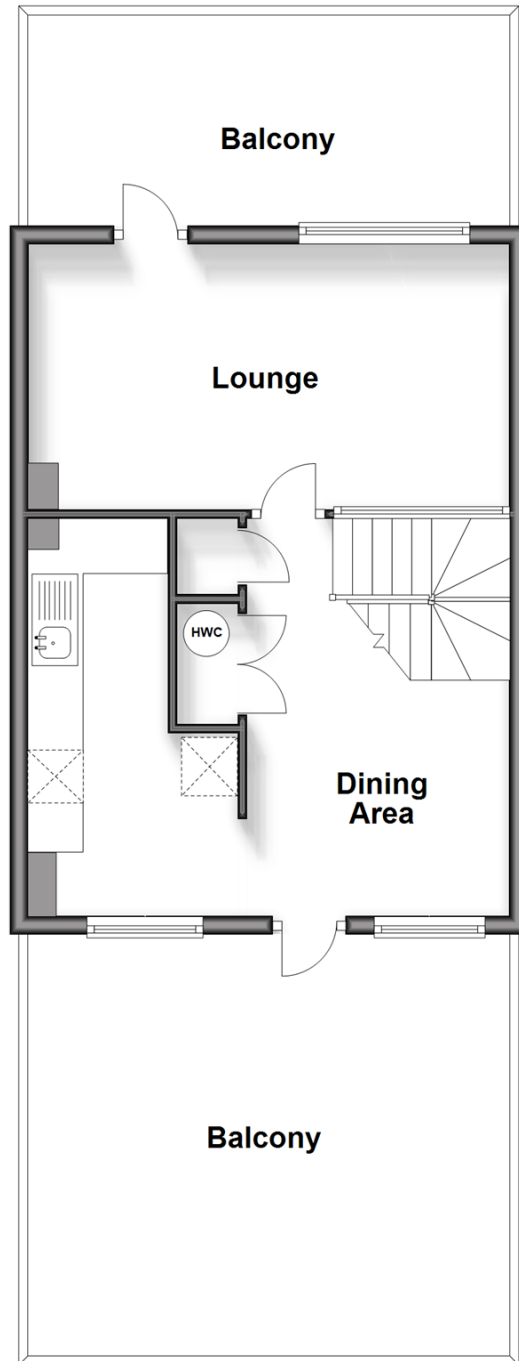
OVER 60?

Secure this property
for up to **59% less!**

cubitt&west
Helping you move forwards

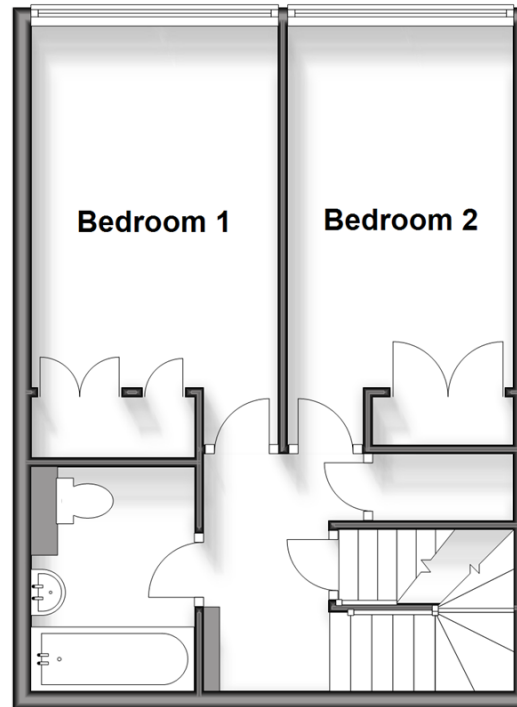
Second Floor

Approx. 38.7 sq. metres (416.4 sq. feet)



First Floor

Approx. 38.3 sq. metres (411.7 sq. feet)



Accommodation

GROUND FLOOR

Entrance Hall

FIRST FLOOR

Landing

Lounge: 17'2 x 9'3 (5.24m x 2.82m)

Balcony

Kitchen : 14'2 x 5'2 (4.32m x 1.58m)

Dining Area: 14'2 x 9'4 (4.32m x 2.85m)

Balcony

SECOND FLOOR

Landing

Bedroom 1: 13'4 x 8'7 (4.07m x 2.62m)

Bedroom 2 : 12'9 x 8'1 (3.89m x 2.47m)

Bathroom

OUTSIDE

Allocated Parking Space

Communal Gardens

Car Port



Main features

- Well presented two double bedroom split level maisonette
- Plenty of storage
- Two balconies front and back of living areas
- Car park and parking space as well as a communal garden
- Spacious and well presented



Nearest Schools

Primary Schools: Langley Green Primary 0.4 miles, Northgate Primary 0.7 miles, Three Bridges Junior School 0.8 miles

Secondary Schools: Hazelwick School 1.2 miles, Manor



Transport Information

Train Stations: Crawley 1.4 miles, Three Bridges 1.8 miles, Ifield 2.1 miles



Address

Turnpike Place, Langley Green, Crawley, West Sussex, RH11



Directions

For directions to this property please contact us.



cubitt&west
Helping you move forwards

Call Crawley Branch 01293 522233 ■ cubittandwest.co.uk



- Legal advice should be taken to verify fixtures/fittings, planning, alterations and/or lease details
- Appliances & services are untested, dimensions are approximate and floor plans are not to scale
- Through a Homewise Home For Life Plan people aged 60+ can secure this property for up to 59% less, by purchasing a Lifetime Lease.



20419822/20240518/SS/NH1