



Price

£1,150,000

Freehold

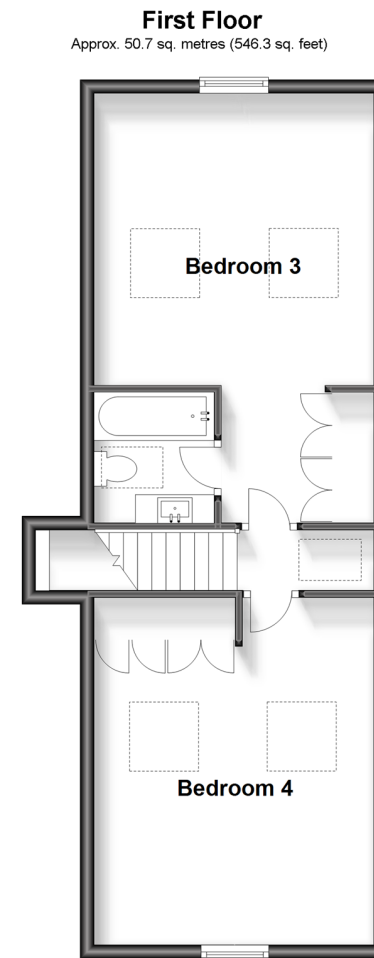
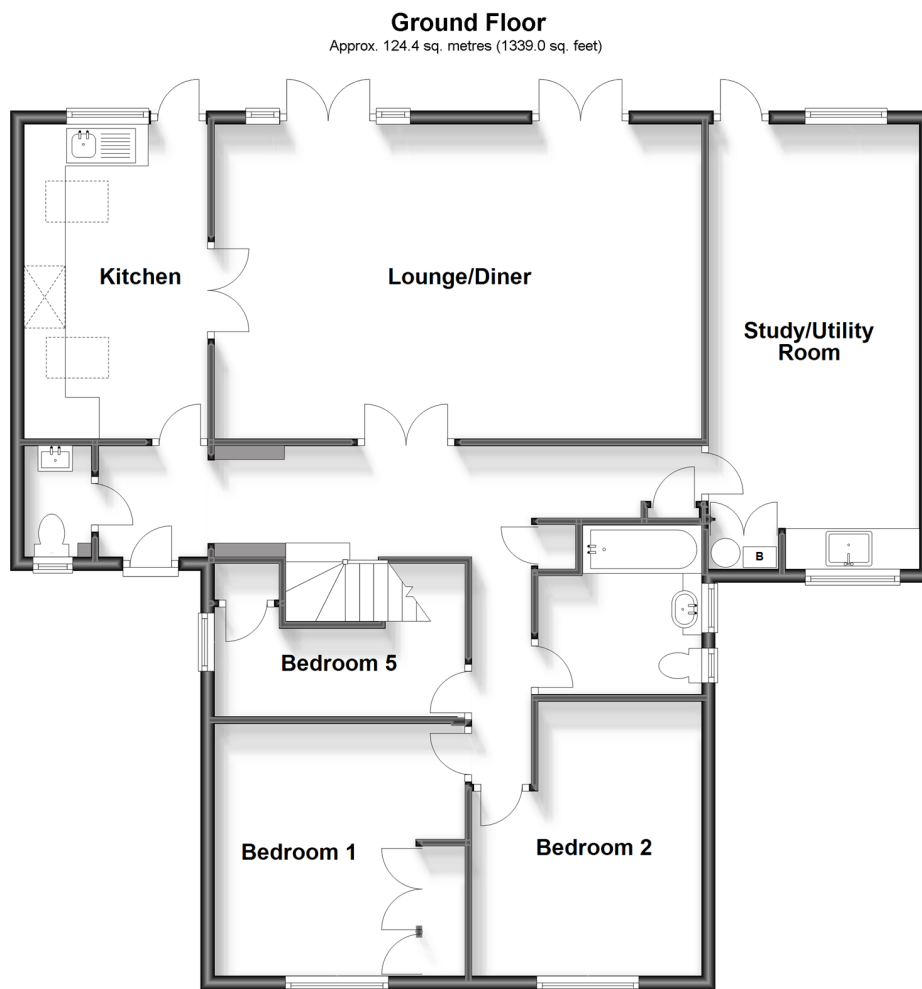
5x  2x  2x 

**Yew Tree Road,
Dorking, Surrey, RH4**

OVER 60?

Secure this property
for up to **59% less!**

cubitt&west
Helping you move forwards



Accommodation

GROUND FLOOR

Entrance Hall

Lounge/Diner: 23'2 x 14'9 (7.07m x 4.50m)

Kitchen: 14'7 x 8'8 (4.45m x 2.64m)

Study/Utility Room: 21'4 x 9'9 (6.51m x 2.97m)

Cloakroom

Bedroom 1: 12'5 x 11'11 (3.79m x 3.63m)

Bedroom 2: 12'1 max x 10'10 max (3.69m x 3.30m)

Bedroom 5: 12'0 x 6'9 (3.66m x 2.06m)

Bathroom

Bedroom 3: 20'5 max x 13'1 (6.23m x 3.99m)

En-suite bathroom

Bedroom 4: 16'0 x 13'3 (4.88m x 4.04m)

OUTSIDE

Front Garden

Driveway Parking for 3 Cars

Garage/Storage Only

Rear Garden

FIRST FLOOR



Main features

- Stunning light, bright and airy family home in sought after private road location
- Sunny terrace and garden ideal for entertaining and with views to Box Hill and Dorking
- Garage, perfect for storage
- 4 double bedrooms with a smaller 5th bedroom/study
- Study/utility or playroom, driveway parking
- Close to stations, schools and Denbies



Nearest Schools

Primary Schools: St Martin's CofE Controlled Primary, Dorking 0.5 miles, St Joseph's Catholic Primary 1.3 miles, St Paul's CofE (Aided) Primary 1.4 miles
Secondary Schools: The Ashcombe School 0.3 miles, The Priory CofE Voluntary Aided School 1.6 miles



Transport Information

Train Stations: Dorking West 0.4 miles, Dorking 0.6 miles, Dorking Deepdene 0.7 miles



Address

Yew Tree Road, Dorking, Surrey, RH4



Directions

For directions to this property please contact us.



cubitt&west
Helping you move forwards

Call Dorking Branch 01306 883399 ■ cubittandwest.co.uk



■ Legal advice should be taken to verify fixtures/fittings, planning, alterations and/or lease details ■ Appliances & services are untested, dimensions are approximate and floor plans are not to scale
■ Through a Homewise Home For Life Plan people aged 60+ can secure this property for up to 59% less, by purchasing a Lifetime Lease.



20502713/20230610/CFE/JG