



**Price**

**£300,000**

**Leasehold**

3x  1x  1x 

**The Mead, Glory Mead,  
Dorking, Surrey, RH4**

**OVER 60?**

Secure this property  
for up to **59% less!**



**Video Tour available**

**cubitt&west**  
Helping you move forwards





## Main features

- Large split-level maisonette
- Good size living space
- Large hallway on 2nd floor perfect for study area
- Ample storage including 2 lofts
- Easy access to Dorking High Street, stations and shops
- Private garden

## Accommodation

### SECOND FLOOR

#### Hallway

Lounge/Diner: 19'3 max x 11'9 max (5.87m x 3.58m)

Kitchen: 11'0 x 9'2 (3.36m x 2.80m)

### THIRD FLOOR

#### Landing

Bedroom 1: 11'11 x 11'0 (3.63m x 3.36m)

Bedroom 2: 11'2 x 11'0 max (3.41m x 3.36m)

Bedroom 3: 8'9 x 7'11 (2.67m x 2.41m)

#### Bathroom

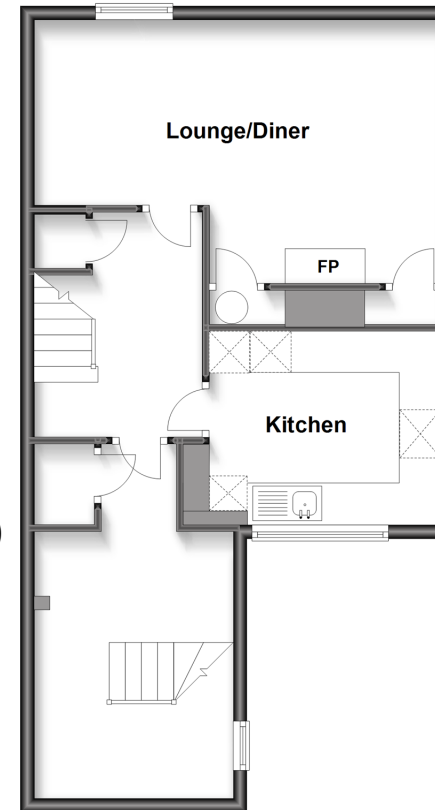
#### Cloakroom

### OUTSIDE

#### Private Garden

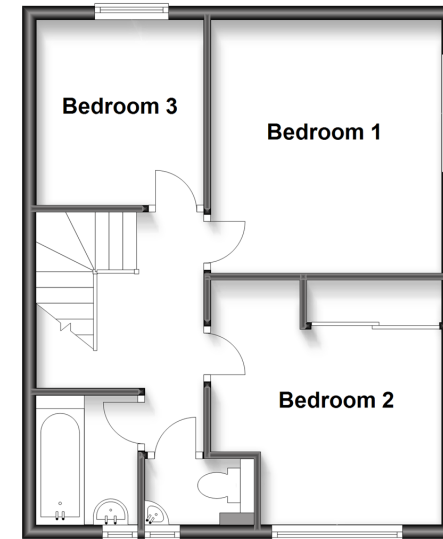
### Second Floor

Approx. 54.3 sq. metres (584.7 sq. feet)



### Third Floor

Approx. 42.9 sq. metres (462.1 sq. feet)



**Call Dorking - 01306 883399 ■ [cubittandwest.co.uk](http://cubittandwest.co.uk)**

- Legal advice should be taken to verify fixtures/fittings, planning, alterations and/or lease details
- Appliances & services are untested, dimensions are approximate and floor plans are not to scale
- Through a Homewise Home For Life Plan people aged 60+ can secure this property for up to 59% less, by purchasing a Lifetime Lease.



20507724/20230819/CFE/JG