



Price

£400,000

Freehold

2x  1x  1x 

**Greenfields Place, Beare
Green, Dorking, Surrey,
RH5**

OVER 60?

Secure this property
for up to **59% less!**

cubitt & west
Helping you move forwards



Main features

- Modern, bright and ready to move straight into
- Both bedrooms are doubles
- Carport with parking for 1-2 cars
- Walking distance to Holmwood Station
- Planning for ground floor extension (MO/2019/1412)

Accommodation

GROUND FLOOR

Entrance Hall

Lounge: 11'11 x 11'3 (3.63m x 3.43m)

Kitchen: 11'3 x 11'2 (3.43m x 3.41m)

FIRST FLOOR

Landing

Bedroom 1: 11'3 x 10'2 (3.43m x 3.10m)

Bedroom 2: 11'5 x 9'0 max (3.48m x 2.75m)

Shower Room

OUTSIDE

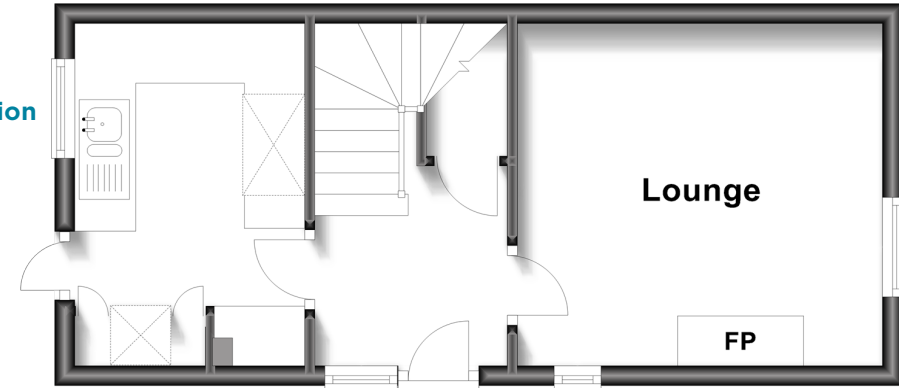
Front Garden

Car Port

Rear Garden

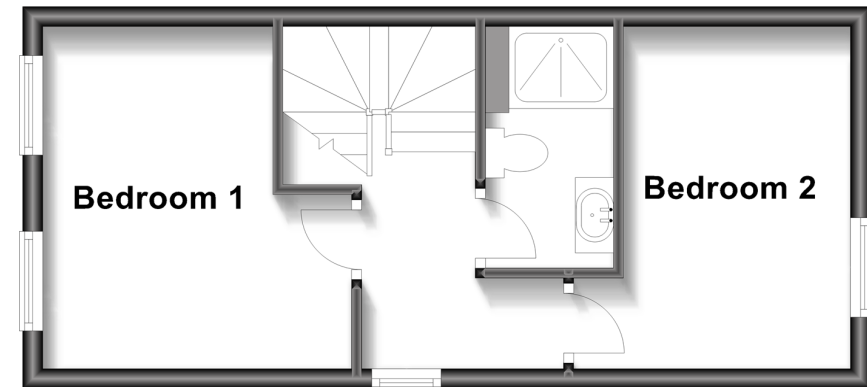
Ground Floor

Approx. 27.6 sq. metres (296.6 sq. feet)



First Floor

Approx. 27.6 sq. metres (296.6 sq. feet)



Call Dorking - 01306 883399 ■ cubittandwest.co.uk

- Legal advice should be taken to verify fixtures/fittings, planning, alterations and/or lease details
- Appliances & services are untested, dimensions are approximate and floor plans are not to scale
- Through a Homewise Home For Life Plan people aged 60+ can secure this property for up to 59% less, by purchasing a Lifetime Lease.



20510827/20240313/CFE/JG