



Price
£500,000

Freehold

2x  1x  1x 

**Bankside Cottages,
Harrow Road East,
Dorking, Surrey, RH4**

OVER 60?

Secure this property
for up to **59% less!**



Video Tour available

cubitt&west
Helping you move forwards



Main features

- Period family home close to Dorking town centre and station.
- Long rear sloping garden seating area at top overlooking Ranmore
- Modern kitchen/breakfast room opening to enclosed patio garden
- No chain, ready to move straight into
- Light and bright loft room

Accommodation

GROUND FLOOR

Lounge: 11'11 x 11'7 (3.63m x 3.53m)

Kitchen/Breakfast Room: 12'1 x 11'4 (3.69m x 3.46m)

FIRST FLOOR

Landing

Bedroom 1: 12'1 x 11'6 (3.69m x 3.51m)

Bedroom 2 (Dining Room): 11'5 x 7'8 (3.48m x 2.34m)

Bathroom

SECOND FLOOR

Loft Room: 16'11 x 12'2 (5.16m x 3.71m)

OUTSIDE

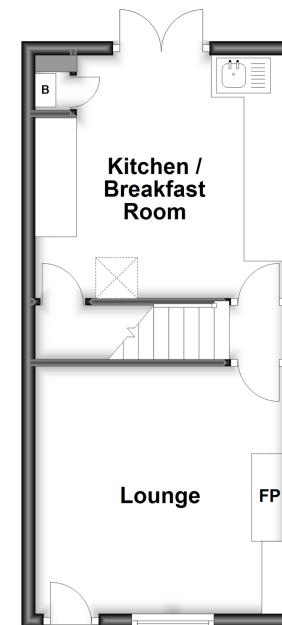
Front Garden

Rear Courtyard Garden

Tiered Rear Garden

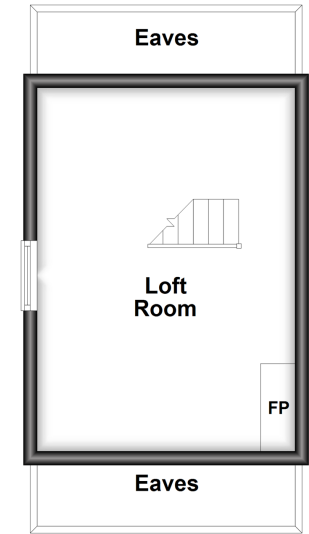
Split Level Ground Floor

Approx. 28.9 sq. metres (311.4 sq. feet)



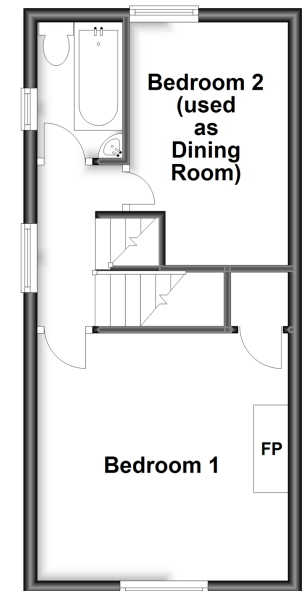
Second Floor

Approx. 19.4 sq. metres (208.3 sq. feet)



First Floor

Approx. 28.9 sq. metres (311.4 sq. feet)



Call Dorking - 01306 883399 ■ cubittandwest.co.uk

- Legal advice should be taken to verify fixtures/fittings, planning, alterations and/or lease details
- Appliances & services are untested, dimensions are approximate and floor plans are not to scale
- Through a Homewise Home For Life Plan people aged 60+ can secure this property for up to 59% less, by purchasing a Lifetime Lease.



20510936/20230204/CFE/JG