



Price

£230,000

Leasehold

1x  1x  1x 

**Chester Close, Dorking,
Surrey, RH4**

OVER 60?

Secure this property
for up to **59% less!**

cubitt&west
Helping you move forwards



Main features

- Communal gardens and parking
- Quiet cul-de-sac in sought after location
- Light and airy lounge/diner
- Close to stations, short walk to Dorking High Street shops and amenities
- Garage en-bloc

Accommodation

TOP FLOOR

Entrance Hall

Lounge/Diner: 14'4 x 10'11 (4.37m x 3.33m)

Kitchen: 8'8 x 5'7 (2.64m x 1.70m)

Bedroom: 11'1 x 10'5 (3.38m x 3.18m)

Bathroom

OUTSIDE

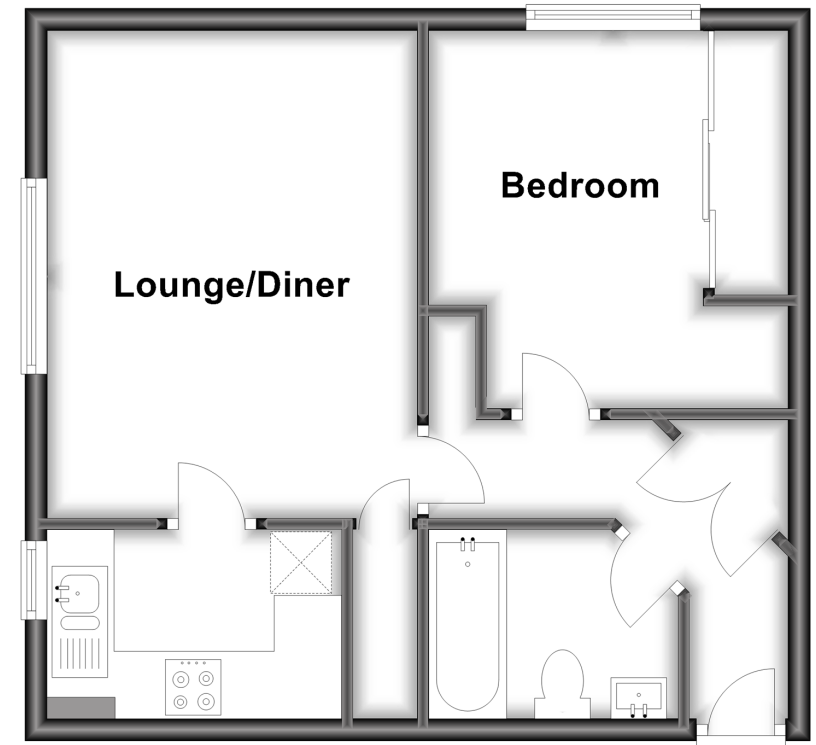
Garage En-Bloc

Communal Parking

Communal Gardens

Top Floor

Approx. 41.2 sq. metres (443.4 sq. feet)



Call Dorking - 01306 883399 ■ cubittandwest.co.uk

- Legal advice should be taken to verify fixtures/fittings, planning, alterations and/or lease details
- Appliances & services are untested, dimensions are approximate and floor plans are not to scale
- Through a Homewise Home For Life Plan people aged 60+ can secure this property for up to 59% less, by purchasing a Lifetime Lease.



20511130/20240316/CFE/JG