



OVER 60?

Secure this property
for up to **59% less!**

Price

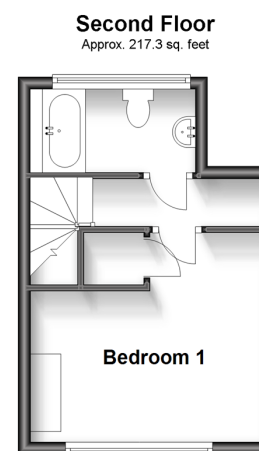
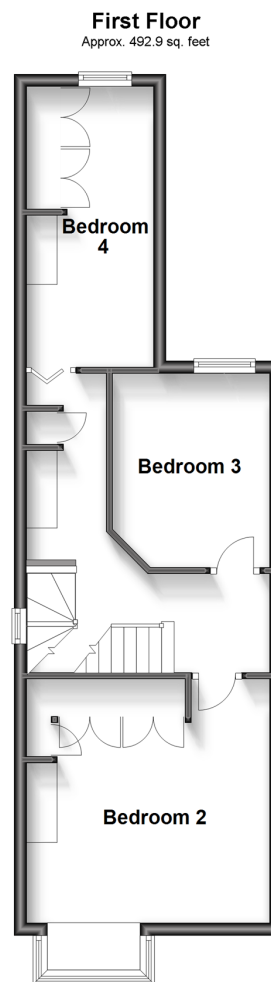
£650,000

Freehold

4x  2x  1x 

**Hart Road, Dorking,
Surrey, RH4**

cubitt&west
Helping you move forwards



Accommodation

GROUND FLOOR

Lounge: 15'7 into bay x 11'0 max
(4.75m x 3.36m)

Kitchen/Diner: 12'11 x 10'8 (3.94m x 3.25m)

Lobby/Boot Room/Utility: 7'9 x 6'3
(2.36m x 1.91m)

Shower Room

FIRST FLOOR

Landing

Bedroom 2: 13'0 up to bay x 12'8 max
(3.97m x 3.86m)

Bedroom 3: 10'5 max x 8'5 (3.18m x 2.57m)

Bedroom 4: 14'10 x 6'7 (4.52m x 2.01m)

SECOND FLOOR

Landing

Bedroom 1: 11'9 max x 11'0 (3.58m x 3.36m)

Bathroom

OUTSIDE

Front Garden

Rear Garden



Main features

- Full of character, charm and period features
- Log burner in lounge and feature fireplace in bedrooms
- Recently refurbished kitchen and shower room with underfloor heating
- Bespoke built in units in boot room/utility
- Bespoke bicycle / garden storage and log store
- Walking distance to train station for easy commuting



Nearest Schools

Primary Schools: St Joseph's Catholic Primary 0.8 miles, St Paul's CofE (Aided) Primary 0.9 miles, Powell Corderoy Primary 1.1 miles
Secondary Schools: The Ashcombe School 0.9 miles, The Priory CofE Voluntary Aided School 1.1 miles



Transport Information

Train Stations: Dorking Deepdene 0.5 miles, Dorking 0.8 miles, Dorking West 1.4 miles



Address

Hart Road, Dorking, Surrey, RH4



Directions

For directions to this property please contact us.



cubitt&west
Helping you move forwards

Call Dorking Branch 01306 883399 ■ cubittandwest.co.uk



- Legal advice should be taken to verify fixtures/fittings, planning, alterations and/or lease details
- Through a Homewise Home For Life Plan people aged 60+ can secure this property for up to 59% less, by purchasing a Lifetime Lease.
- Appliances & services are untested, dimensions are approximate and floor plans are not to scale



20511169/20230804/JG/JG