



Price

£360,000

Freehold

2x  1x  1x 

**Hanover Court, Milton
Court Lane, Dorking,
Surrey, RH4**

cubitt&west
Helping you move forwards



Main features

- Sought after development for the over 55's
- Communal gardens and communal parking
- Countryside walks on your doorstep & views toward Ranmore
- Flat & level walk into Dorking with its High Street & shops
- Storage for Mobility Scooter

Accommodation

GROUND FLOOR

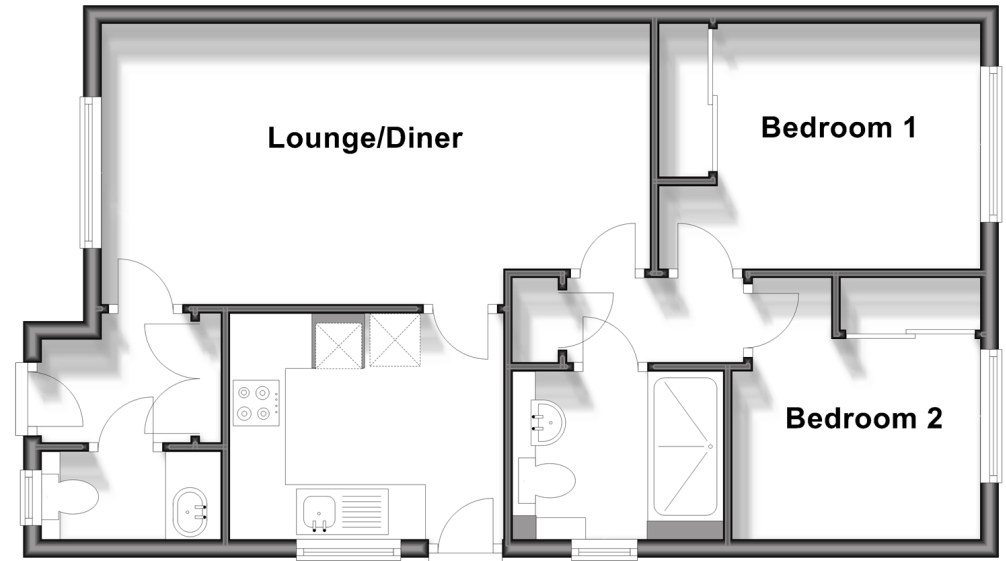
Entrance Hall
 Lounge/Diner: 19'8 max x 10'1 max (6.00m x 3.08m)
 Kitchen: 10'0 x 8'0 (3.05m x 2.44m)
 Cloakroom
 Bedroom 1: 11'9 max x 8'10 (3.58m x 2.69m)
 Bedroom 2: 9'4 x 8'10 (2.85m x 2.69m)
 Shower Room

OUTSIDE

Communal Parking
 Communal Gardens
 Mobility Scooter Storage
 Mobility Scooter Charge Point

Ground Floor

Approx. 56.1 sq. metres (604.3 sq. feet)



Call Dorking - 01306 883399 ■ cubittandwest.co.uk

■ Legal advice should be taken to verify fixtures/fittings, planning, alterations and/or lease details

■ Appliances & services are untested, dimensions are approximate and floor plans are not to scale



20511209/20240422/JG/JG