



Price

£230,000

Leasehold

1x  1x  1x 

**Austen Court, Chart
Gardens, Dorking,
Surrey, RH5**

OVER 60?

Secure this property
for up to **59% less!**

cubitt&west
Helping you move forwards



Main features

- Good size rooms, light bright and airy
- Communal garden
- Allocated parking
- Perfect for first time buyers or buy to let investors
- Easy access to Dorking High Street and station
- Secure entry

Accommodation

GROUND FLOOR

Entrance Hall

Lounge/Dining Area: 18'2 x 11'3
(5.54m x 3.43m)

Kitchen: 9'7 x 9'1 (2.92m x 2.77m)

Bedroom : 13'5 max x 9'8 (4.09m x 2.95m)

Bathroom

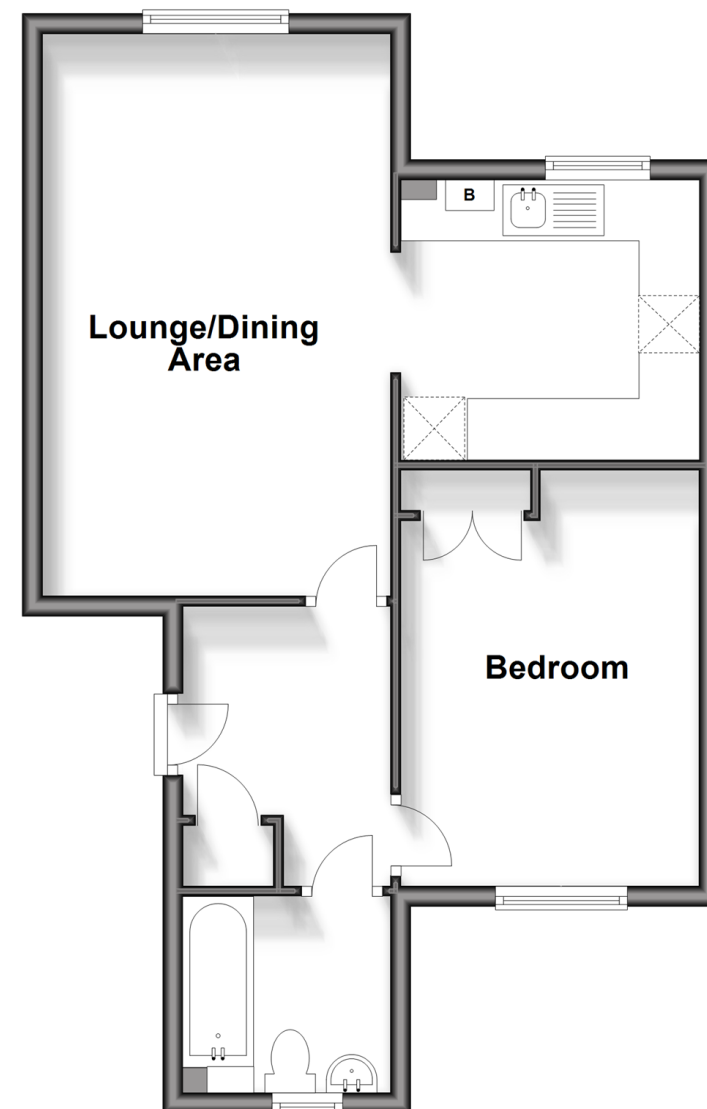
OUTSIDE

Allocated Parking Space

Communal Garden

Ground Floor

Approx. 50.3 sq. metres (541.5 sq. feet)



Call Dorking - 01306 883399 ■ cubittandwest.co.uk

- Legal advice should be taken to verify fixtures/fittings, planning, alterations and/or lease details
- Appliances & services are untested, dimensions are approximate and floor plans are not to scale
- Through a Homewise Home For Life Plan people aged 60+ can secure this property for up to 59% less, by purchasing a Lifetime Lease.