



OVER 60?

Secure this property
for up to **59% less!**

Price
£375,000

Freehold

2x  1x  1x 

**Ansell Road, Dorking,
Surrey, RH4**

cubitt&west
Helping you move forwards



Main features

- Character cottage on a private road
- Private courtyard with direct access to large secure communal garden
- Fantastic town centre location
- Close to High Street amenities, stations and schools
- No chain

Accommodation

GROUND FLOOR

Lounge: 13'5 x 11'2 (4.09m x 3.41m)

Kitchen /Dining Room: 13'4 x 7'8 (4.07m x 2.34m)

FIRST FLOOR

Landing

Bedroom 1: 10'6 x 8'4 (3.20m x 2.54m)

Bedroom 2: 8'1 up to fitted wardrobes x 6'8 (2.47m x 2.03m)

Bathroom

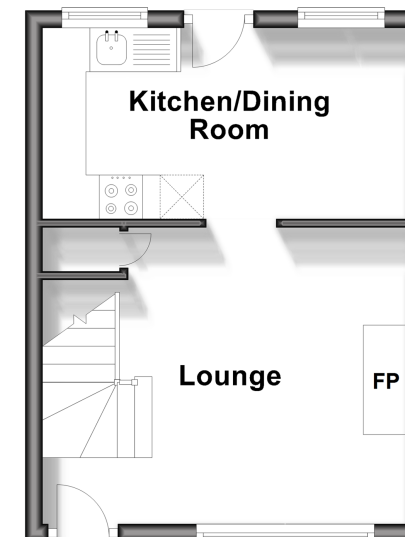
OUTSIDE

Private Courtyard

Communal Garden

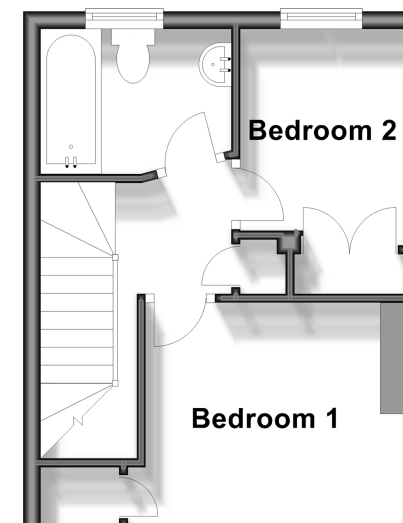
Ground Floor

Approx. 24.1 sq. metres (259.6 sq. feet)



First Floor

Approx. 23.9 sq. metres (257.0 sq. feet)



Call Dorking - 01306 883399 ■ cubittandwest.co.uk

- Legal advice should be taken to verify fixtures/fittings, planning, alterations and/or lease details
- Appliances & services are untested, dimensions are approximate and floor plans are not to scale
- Through a Homewise Home For Life Plan people aged 60+ can secure this property for up to 59% less, by purchasing a Lifetime Lease.



20511317/20240429/CFE/OK