



Price
£280,000

**Share of
Freehold**

1x  1x  1x 

**The Street, Capel,
Dorking, Surrey, RH5**

OVER 60?

Secure this property
for up to **59% less!**

cubitt&west
Helping you move forwards



Main features

- Bright and spacious living
- Sought after village location
- Close to train station and local shops
- Allocated parking space with electrical charge point and additional visitor parking
- Modern new build with energy efficiency at its core
- No service charges or ground rent

Accommodation

FIRST FLOOR

Entrance Hall

Kitchen Lounge/Diner: 19'0 x 14'0
(5.80m x 4.27m)

Bedroom: 11'1 x 10'0 (3.38m x 3.05m)

Bathroom

OUTSIDE

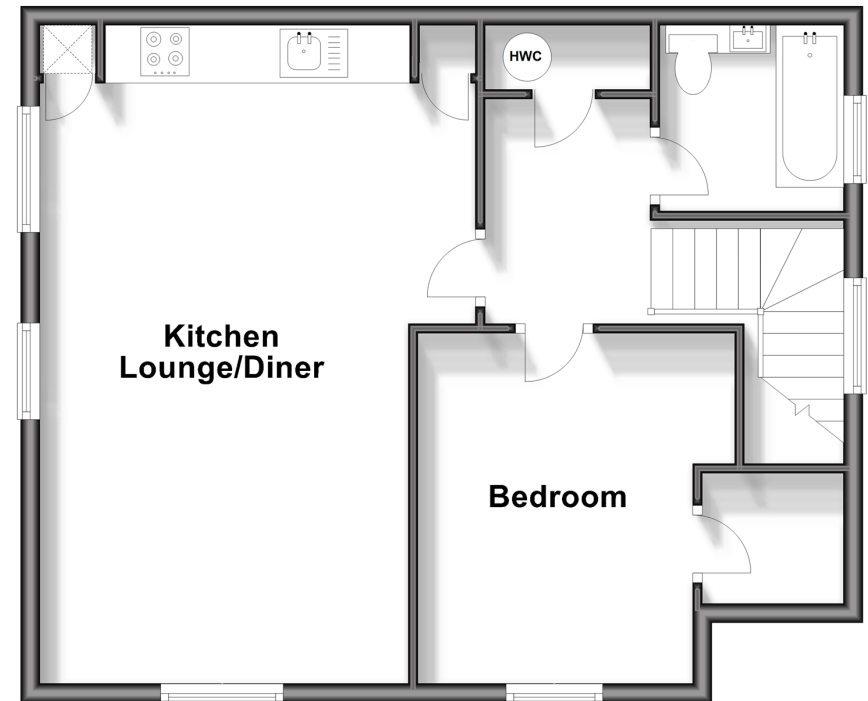
Patio Area

Allocated Parking Space

Visitor Parking

First Floor

Approx. 55.5 sq. metres (597.0 sq. feet)



Call Dorking - 01306 883399 ■ cubittandwest.co.uk

- Legal advice should be taken to verify fixtures/fittings, planning, alterations and/or lease details
- Appliances & services are untested, dimensions are approximate and floor plans are not to scale
- Through a Homewise Home For Life Plan people aged 60+ can secure this property for up to 59% less, by purchasing a Lifetime Lease.



20511344/20240427/CFE/DC