



Price
£325,000

Freehold

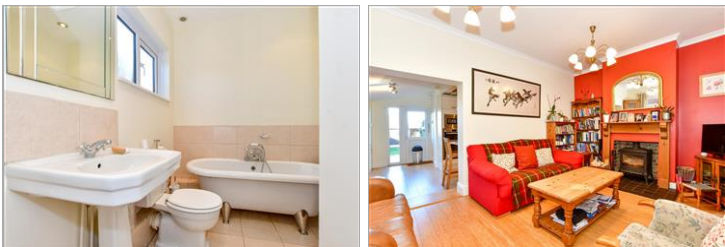
2x  2x  2x 

**London Road, Cowplain,
Waterlooville,
Hampshire, PO8**

OVER 60?

Secure this property
for up to **59% less!**

cubitt&west
Helping you move forwards



Main features

- Beautifully presented throughout with original features
- En-suite shower room to main bedroom
- Studio at the end of the garden
- Solar panels on the roof and resident permit parking
- Close to good schools and local shops

Accommodation

GROUND FLOOR

Entrance Hall

Dining Room: 12'0 x 10'0 (3.66m x 3.05m)

Lounge: 16'0 x 11'0 (4.88m x 3.36m)

Kitchen: 16'0 x 14'0 (4.88m x 4.27m)

Bathroom

FIRST FLOOR

Landing

Bedroom 1: 13'0 x 11'0 (3.97m x 3.36m)

En-Suite Shower Room

Bedroom 2: 13'0 x 8'1 (3.97m x 2.47m)

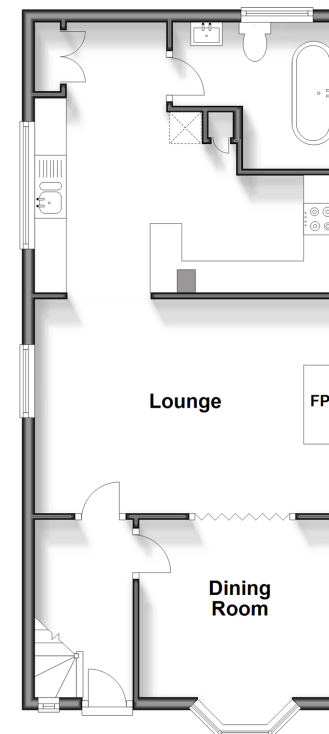
OUTSIDE

Front and Rear Gardens

Studio

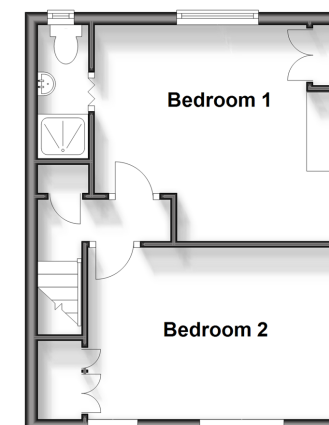
Ground Floor

Approx. 50.9 sq. metres (548.0 sq. feet)



First Floor

Approx. 29.7 sq. metres (319.4 sq. feet)



Call Waterloo - 02392 267244 ■ cubittandwest.co.uk

- Legal advice should be taken to verify fixtures/fittings, planning, alterations and/or lease details
- Appliances & services are untested, dimensions are approximate and floor plans are not to scale
- Through a Homewise Home For Life Plan people aged 60+ can secure this property for up to 59% less, by purchasing a Lifetime Lease.



20607903/20240502/MO/MO