



**Price**

**£35,000**

**Leasehold**

1x  1x  1x 

**Roman Court, High  
Street, Cowden, Kent,  
TN8**

**cubitt&west**  
Helping you move forwards





## Main features

- First floor retirement flat
- 24 Hour cover estate managers and assistance on call
- Wheel chair access
- Apello Emergency call system
- Beautiful communal areas such as guest suits, laundry room and lounge
- Communal car parking on a first come, first served basis
- Landscaped gardens to enjoy the social events

## Accommodation

### FIRST FLOOR

Entrance Hall

Lounge/Dining Room: 21'11 x 10'7 (6.68m x 3.23m)

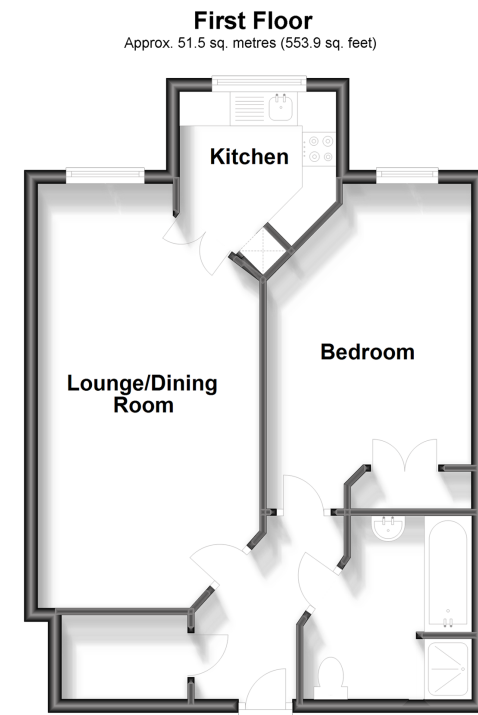
Kitchen: 8'2 x 7'6 (2.49m x 2.29m)

Bedroom: 13'5 x 10'0 (4.09m x 3.05m)

Bathroom

### OUTSIDE

Communal Garden



**Call East Grinstead - 01342 314324 ■ [cubittandwest.co.uk](http://cubittandwest.co.uk)**

■ Legal advice should be taken to verify fixtures/fittings, planning, alterations and/or lease details

■ Appliances & services are untested, dimensions are approximate and floor plans are not to scale



20613086/20240417/JS/CB