



Guide Price
£500,000

Freehold

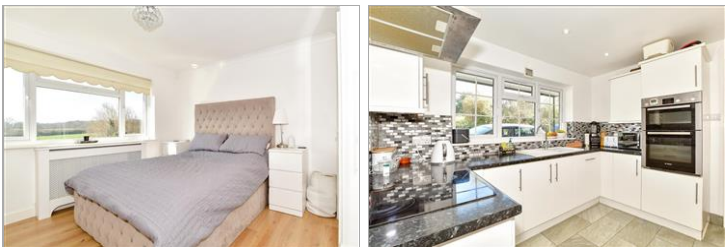
3x  1x  1x 

**Beech Close, Blindley
Heath, Surrey, RH7**

OVER 60?

Secure this property
for up to **59% less!**

cubitt&west
Helping you move forwards



Main features

- Guide price £500,000 - £525,000
- Detached house in a cul-de-sac location
- Beautiful views from the rear
- Modernised throughout
- Large rear garden backing onto fields
- Garage and driveway parking

Accommodation

GROUND FLOOR

Entrance Hall

Cloakroom

Lounge/Dining Room: 21'1 x 12'3 (6.43m x 3.74m)

Kitchen: 11'5 x 10'2 (3.48m x 3.10m)

Study: 12'5 x 10'9 (3.79m x 3.28m)

FIRST FLOOR

Landing

Bedroom 1: 12'7 x 11'7 (3.84m x 3.53m)

Bedroom 2: 11'7 x 10'9 (3.53m x 3.28m)

Bedroom 3: 9'8 x 8'11 (2.95m x 2.72m)

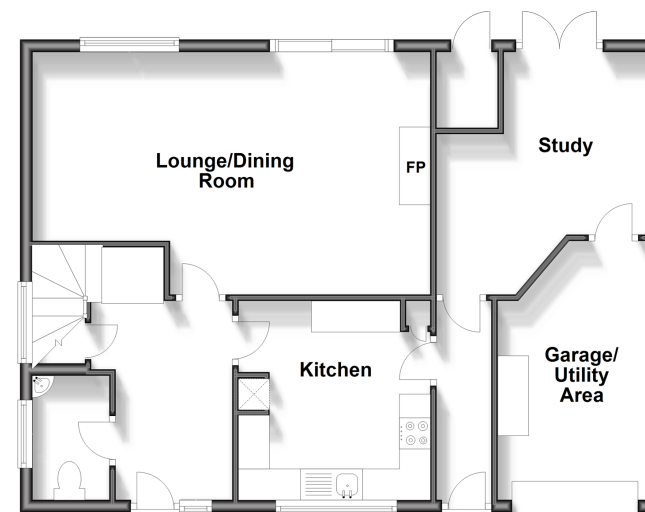
OUTSIDE

Garage/Utility Area

Rear Garden

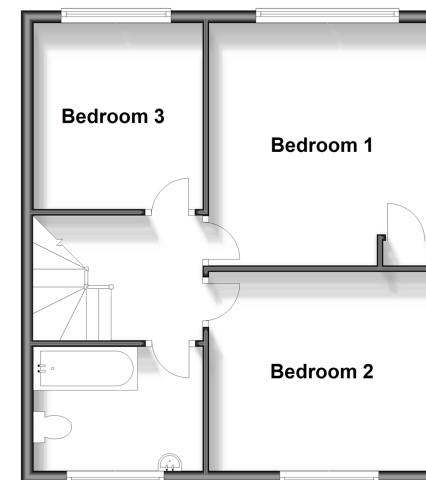
Ground Floor

Approx. 71.9 sq. metres (774.1 sq. feet)



First Floor

Approx. 46.3 sq. metres (498.4 sq. feet)



Call East Grinstead - 01342 314324 ■ cubittandwest.co.uk

- Legal advice should be taken to verify fixtures/fittings, planning, alterations and/or lease details
- Appliances & services are untested, dimensions are approximate and floor plans are not to scale
- Through a Homewise Home For Life Plan people aged 60+ can secure this property for up to 59% less, by purchasing a Lifetime Lease.



20613487/20240315/CB/CB