



Guide Price
£525,000

Freehold

4x  1x  3x 

**Burleigh Way, Crawley
Down, West Sussex,
RH10**

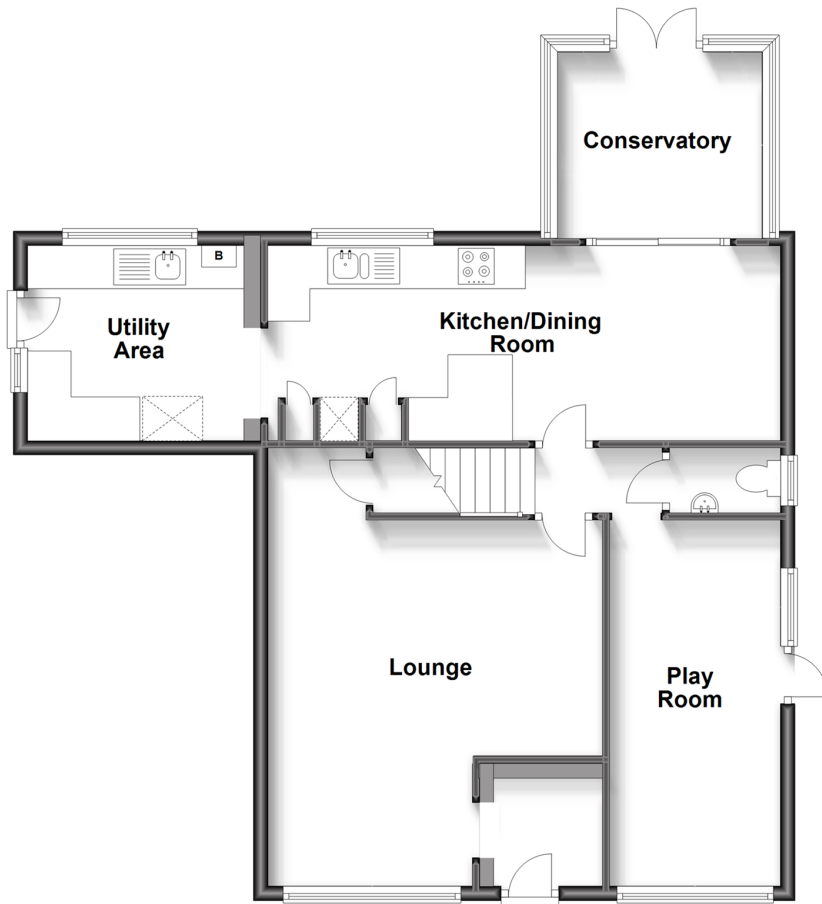
OVER 60?

Secure this property
for up to **59% less!**

cubitt&west
Helping you move forwards

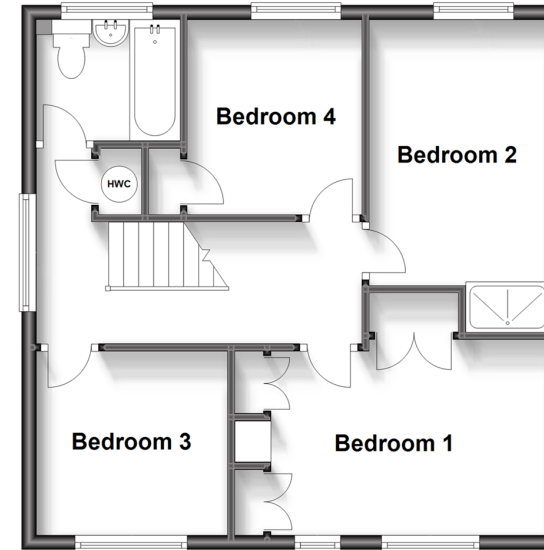
Ground Floor

Approx. 79.9 sq. metres (860.5 sq. feet)



First Floor

Approx. 50.9 sq. metres (548.2 sq. feet)



Accommodation

GROUND FLOOR

Entrance Porch

Cloakroom

Kitchen/Dining Room: 23'0 x 9'0 (7.02m x 2.75m)

Utility Area: 10'0 x 9'11 (3.05m x 3.02m)

Conservatory: 9'0 x 8'0 (2.75m x 2.44m)

Lounge: (L-shaped) 15'0 x 15'0 (4.58m x 4.58m) plus 15'0 x 10'0 minimum (4.58m x 3.05m)

Playroom: 16'0 x 7'0 (4.88m x 2.14m)

FIRST FLOOR

Landing

Bedroom 1: 14'3 x 8'5 (4.35m x 2.57m)

Bedroom 2: 12'1 x 8'3 (3.69m x 2.52m)

Bedroom 3: 9'0 x 8'0 (2.75m x 2.44m)

Bedroom 4: 8'0 x 8'0 (2.44m x 2.44m)

Bathroom

OUTSIDE

Front & Rear Gardens

Driveway Parking



Main features

- Well presented detached house
- Extensively updated and modernised by current owner
- Driveway parking for more than one vehicle
- Located in a popular village with sought after primary school
- Offering an additional reception room currently used as a playroom



Nearest Schools

Primary Schools: Crawley Down Village CofE 0.0 miles, Turners Hill CofE Primary 1.5 miles, Felbridge Primary 1.6 miles

Secondary Schools: Imberhorne School 1.8 miles, Worth



Transport Information

Train Stations: East Grinstead 2.4 miles, Dormans 3.7 miles, Three Bridges 3.8 miles



Address

Burleigh Way, Crawley Down, West Sussex, RH10



Directions

For directions to this property please contact us.



cubitt&west
Helping you move forwards

Call East Grinstead Branch 01342 314324 ■ cubittandwest.co.uk



- The seller is a person connected with Cubitt & West as defined in the Estate Agents Act 1979
- Appliances & services are untested, dimensions are approximate and floor plans are not to scale

- Legal advice should be taken to verify fixtures/fittings, planning, alterations and/or lease details
- Through a Homewise Home For Life Plan people aged 60+ can secure this property for up to 59% less, by purchasing a Lifetime Lease.



20613684/20230814/CB/CM