

**OVER 60?**

Secure this property  
for up to **59% less!**



**Price**

**£1,150,000**

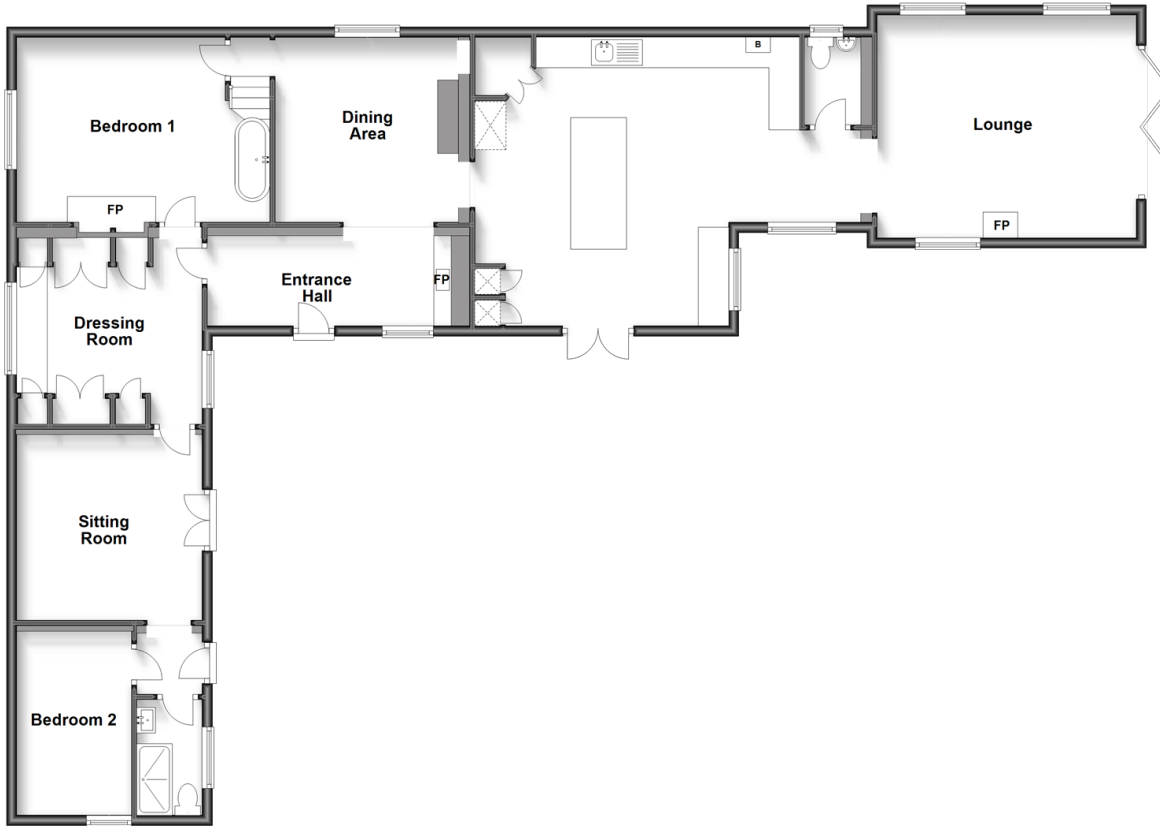
**Freehold**

5x  2x  2x 

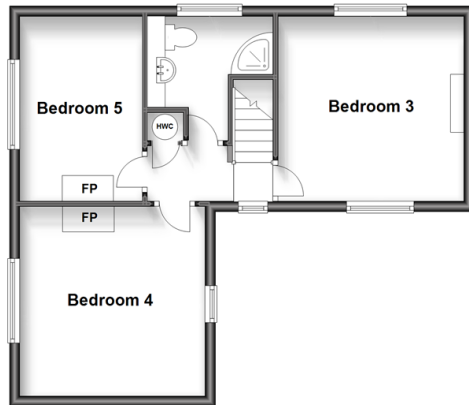
Newchapel Road, Lingfield, Surrey, RH7

**cubitt&west**  
Helping you move forwards

**Ground Floor**  
Approx. 146.0 sq. metres (1571.4 sq. feet)



**Split Level First Floor**  
Approx. 45.3 sq. metres (487.5 sq. feet)



## Accommodation

### GROUND FLOOR

Entrance Hall: 15'8 x 5'10 (4.78m x 1.78m)

Cloakroom

Kitchen/Diner: 18'9 x 16'6 (5.72m x 5.03m)

Lounge: 16'11 x 14'4 (5.16m x 4.37m)

Dining Area: 12'0 x 11'10 (3.66m x 3.61m)

Bedroom 1: 16'5 into alcove x 12'1 (5.01m x 3.69m)

Dressing Room: 11'11 x 11'11 (3.63m x 3.63m)

Sitting Room: 12'1 x 11'11 (3.69m x 3.63m)

Shower Room

Bedroom 2: 12'0 x 7'4 (3.66m x 2.24m)

### SPLIT LEVEL FIRST FLOOR

Landing

Bedroom 4: 12'2 x 12'0 (3.71m x 3.66m)

Bedroom 3: 12'0 x 11'10 (3.66m x 3.61m)

Bedroom 5: 12'3 x 10'11 to chimney breast (3.74m x 3.33m)

Bathroom: 8'1 x 6'1 (2.47m x 1.86m)

### OUTSIDE

Front & Rear Gardens

Car Port





## Main features

- Detached house in gated, semi rural location
- Large gated driveway with double car port
- With easy reach of Dormans and Lingfield station
- Offering an additional lounge, bedroom and shower room with their own access - perfect to multi generations
- Absolutely stunning decor and finish throughout, offering boutique hotel vibe accommodation



### Nearest Schools

Primary Schools: Lingfield Primary 1.6 miles, Felbridge Primary 2.7 miles, Blackwell Primary 2.7 miles

Secondary Schools: Lingfield Notre Dame 2.4 miles, National Centre for Young People with Epilepsy 2.6 miles,



### Transport Information

Train Stations: Lingfield 2.0 miles, Dormans 3.1 miles, East Grinstead 4.2 miles



### Address

Newchapel Road, Lingfield, Surrey, RH7



### Directions

For directions to this property please contact us.





**cubitt&west**  
Helping you move forwards

Call East Grinstead Branch 01342 314324 ■ [cubittandwest.co.uk](http://cubittandwest.co.uk)



■ Legal advice should be taken to verify fixtures/fittings, planning, alterations and/or lease details ■ Appliances & services are untested, dimensions are approximate and floor plans are not to scale  
■ Through a Homewise Home For Life Plan people aged 60+ can secure this property for up to 59% less, by purchasing a Lifetime Lease.



20613720/20230630/CB/CM