



Price

£140,000

Leasehold

2x  1x  1x 

**Sackville Court, Fairfield
Road, East Grinstead,
West Sussex, RH19**

cubitt&west
Helping you move forwards



Main features

- **First floor retirement apartment**
- **White goods to be included**
- **Low service charges**
- **NO ONWARD CHAIN**
- **Town centre location and local community events**
- **Beautiful views from the Juliet balcony**

Accommodation

FIRST FLOOR

Entrance Hall

Lounge: 15'3 x 11'4 (4.65m x 3.46m)

Kitchen: 10'8 x 7'5 (3.25m x 2.26m)

Bedroom 1: 14'5 x 8'10 (4.40m x 2.69m)

Bedroom 2: 9'10 x 6'4 (3.00m x 1.93m)

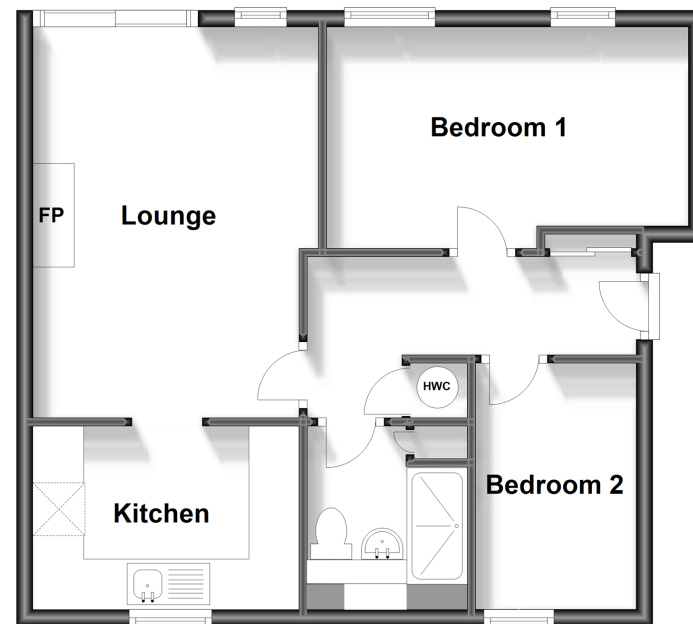
Shower Room

OUTSIDE

Communal Gardens

First Floor

Approx. 52.8 sq. metres (568.7 sq. feet)



Call East Grinstead - 01342 314324 ■ cubittandwest.co.uk

■ Legal advice should be taken to verify fixtures/fittings, planning, alterations and/or lease details

■ Appliances & services are untested, dimensions are approximate and floor plans are not to scale

