



Price

£480,000

Freehold

3x  1x  2x 

**Woods Hill Lane,
Ashurst Wood, West
Sussex, RH19**

cubitt&west
Helping you move forwards



Main features

- **Spacious link detached bungalow**
- **Stunning views over rolling countryside**
- **Flexible accommodation with 3/4 bedrooms**
- **Lots of storage and parking with a car port and generous block paved driveway**
- **Set in a very popular quiet village with lovely community feel**
- **No onward chain and part exchange available**

Accommodation

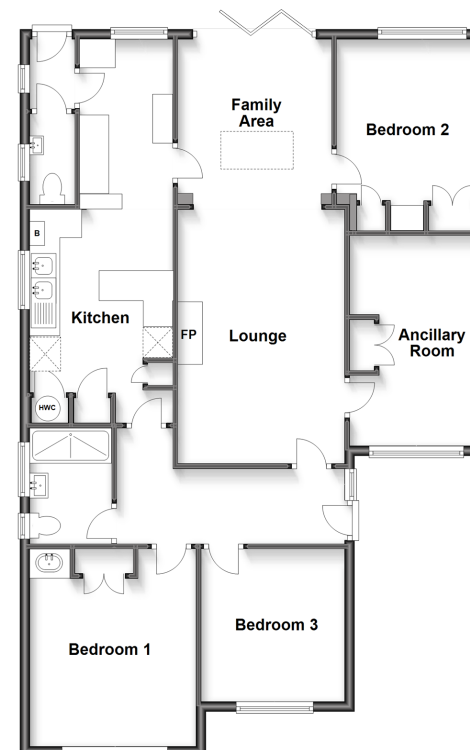
SPLIT LEVEL GROUND FLOOR

Entrance Hall
 Lounge: 16'7 x 11'6 (5.06m x 3.51m)
 Family Area: 10'1 x 9'6 (3.08m x 2.90m)
 Kitchen: 14'1 x 9'7 (4.30m x 2.92m)
 Cloakroom
 Bedroom 1: 13'11 x 11'0 (4.24m x 3.36m)
 Bedroom 2: 11'2 x 9'2 (3.41m x 2.80m)
 Bedroom 3: 10'5 x 10'4 (3.18m x 3.15m)
 Ancillary Room: 14'2 x 8'3 (4.32m x 2.52m)
 Wet Room

OUTSIDE

Front & Rear Gardens
 Car Port
 Driveway Parking

Split Level Ground Floor
 Approx. 108.5 sq. metres (1167.6 sq. feet)



Call East Grinstead - 01342 314324 ■ cubittandwest.co.uk

■ Legal advice should be taken to verify fixtures/fittings, planning, alterations and/or lease details

■ Appliances & services are untested, dimensions are approximate and floor plans are not to scale

