



Guide Price
£325,000

Freehold

2x  1x  1x 

Maypole Road, East
Grinstead, West Sussex,
RH19

cubitt & west
Helping you move forwards



Main features

- **GUIDE PRICE £325,000-£350,000**
- **Charming terraced cottage built circa 1820 with character features such as open fire place**
- **Generous garden with floral zone and veggie patch**
- **Handy utility room**
- **Full central heating and double glazing**
- **Situated in the centre of a vibrant and popular village**

Accommodation

GROUND FLOOR

Entrance Porch
 Lounge: 12'0 x 10'7 (3.66m x 3.23m)
 Dining Area: 11'8 x 8'1 (3.56m x 2.47m)
 Kitchen: 11'5 x 7'6 (3.48m x 2.29m)
 Utility Room: 7'1 x 4'9 (2.16m x 1.45m)
 Bathroom

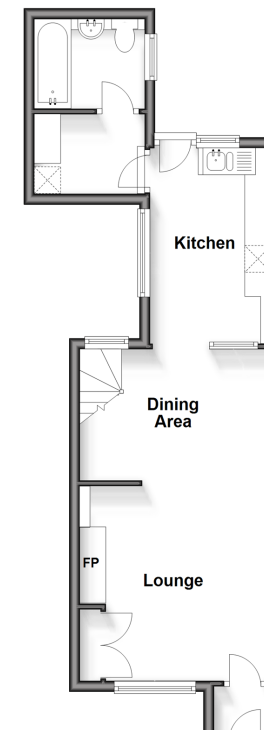
FIRST FLOOR

Landing
 Bedroom 1: 10'6 x 10'6 (3.20m x 3.20m)
 Bedroom 2: 9'2 x 8'0 (2.80m x 2.44m)

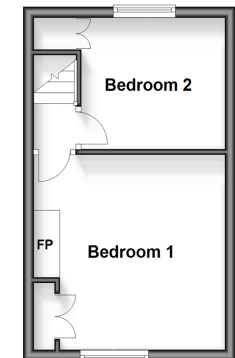
OUTSIDE

Front & Rear Gardens

Ground Floor
 Approx. 39.2 sq. metres (422.1 sq. feet)



First Floor
 Approx. 22.9 sq. metres (246.4 sq. feet)



Call East Grinstead - 01342 314324 ■ cubittandwest.co.uk

■ Legal advice should be taken to verify fixtures/fittings, planning, alterations and/or lease details

■ Appliances & services are untested, dimensions are approximate and floor plans are not to scale



20613912/20240228/JS/CM