



**Guide Price**  
**£650,000**

**Freehold**

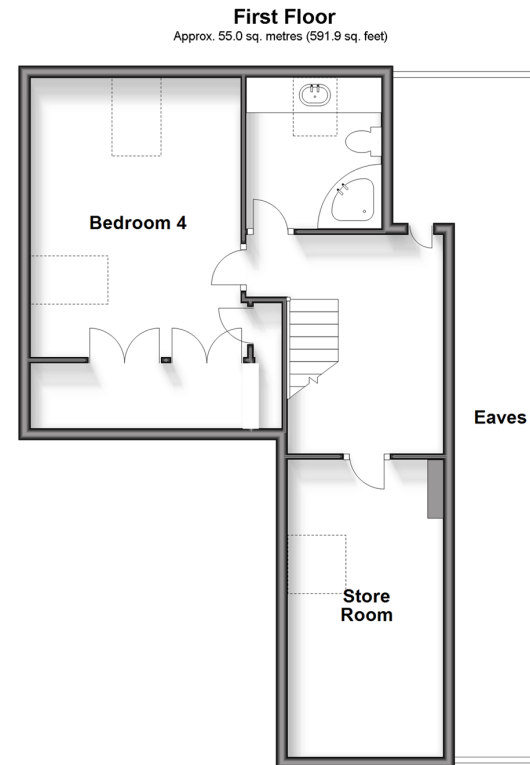
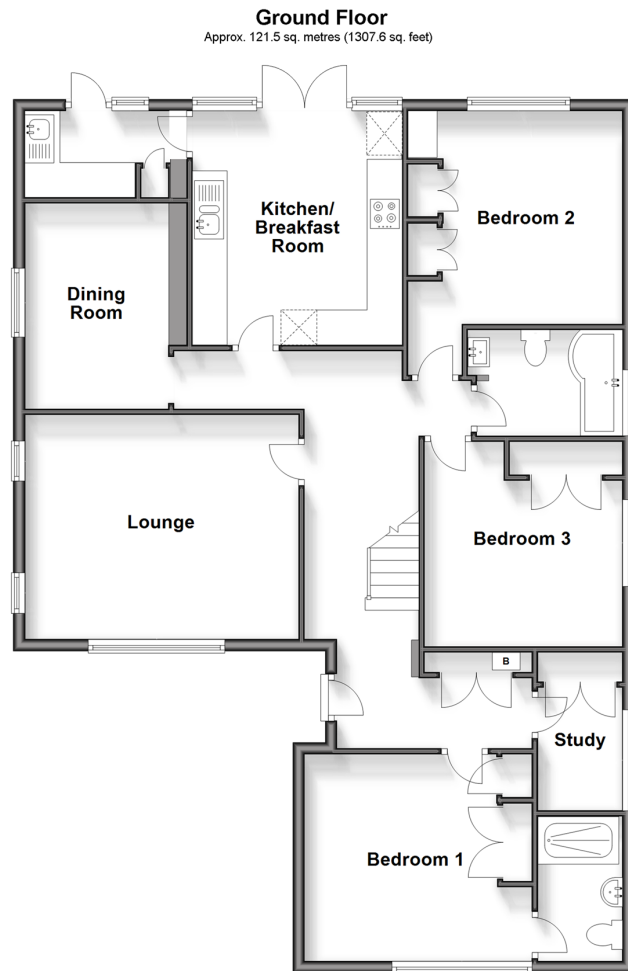
4x  3x  2x 

**Lingfield Road, East  
Grinstead, West Sussex,  
RH19**

**OVER 60?**

Secure this property  
for up to **59% less!**

**cubitt&west**  
Helping you move forwards



## Accommodation

### GROUND FLOOR

Entrance Hall

Dining Room: 11'8 x 8'4 (3.56m x 2.54m)

Kitchen/Breakfast Room: 13'5 x 12'1 (4.09m x 3.69m)

Utility Room

Lounge: 15'5 x 12'6 (4.70m x 3.81m)

Study: 7'2 x 4'7 (2.19m x 1.40m)

Bedroom 1: 12'0 x 11'9 (3.66m x 3.58m)

En-Suite Shower Room

Bedroom 2: 11'7 x 10'7 (3.53m x 3.23m)

Bedroom 3: 12'9 x 11'6 (3.89m x 3.51m)

Bathroom

### FIRST FLOOR

Landing

Bedroom 4: 16'1 x 11'8 (4.91m x 3.56m)

Bathroom

Store Room: 16'6 x 9'2 (5.03m x 2.80m)

### OUTSIDE

Front & Rear Gardens

Driveway Parking





## Main features

- Deceptively spacious chalet bungalow
- Immaculately presented throughout
- Dedicated home office/study
- Large summer house in garden to add extra entertaining space
- Large driveway for a number of vehicles



### Nearest Schools

Primary Schools: Baldwins Hill Primary, East Grinstead 0.2 miles, St Mary's CofE Primary, East Grinstead 0.3 miles, Halsford Park Primary 0.9 miles  
Secondary Schools: Imberhorne School 1.5 miles, Sackville School 1.6 miles, Greenfields School 3.6 miles



### Transport Information

Train Stations: East Grinstead 1.1 miles, Dormans 2.7 miles, Lingfield 3.5 miles



### Address

Lingfield Road, East Grinstead, West Sussex, RH19



### Directions

For directions to this property please contact us.





**cubitt&west**  
Helping you move forwards

Call East Grinstead Branch 01342 314324 ■ [cubittandwest.co.uk](https://cubittandwest.co.uk)



■ Legal advice should be taken to verify fixtures/fittings, planning, alterations and/or lease details ■ Appliances & services are untested, dimensions are approximate and floor plans are not to scale  
■ Through a Homewise Home For Life Plan people aged 60+ can secure this property for up to 59% less, by purchasing a Lifetime Lease.



20613937/20240318/JS/CM