



**Price**  
**£160,000**

**Leasehold**

1x  1x  1x 

**Wavertree Court,  
Massetts Road, Horley,  
Surrey, RH6**



Video Tour available

**cubitt&west**  
Helping you move forwards





## Main features

- Ground floor retirement flat in complex for the over 60's
- Walking distance of town centre and local amenities
- Extensive communal guest facilities
- Resident management team & alarm service
- Delightful communal gardens

## Accommodation

### GROUND FLOOR

#### Entrance Hall

**Lounge:** 29'5 maximum x 10'2 at widest point (8.97m x 3.10m)

**Kitchen:** 7'8 up to fitted cupboard x 7'2 at widest point (2.34m x 2.19m)

**Bedroom:** 17'6 up to fitted wardrobes x 9'7 at widest point (5.34m x 2.92m)

#### Bathroom

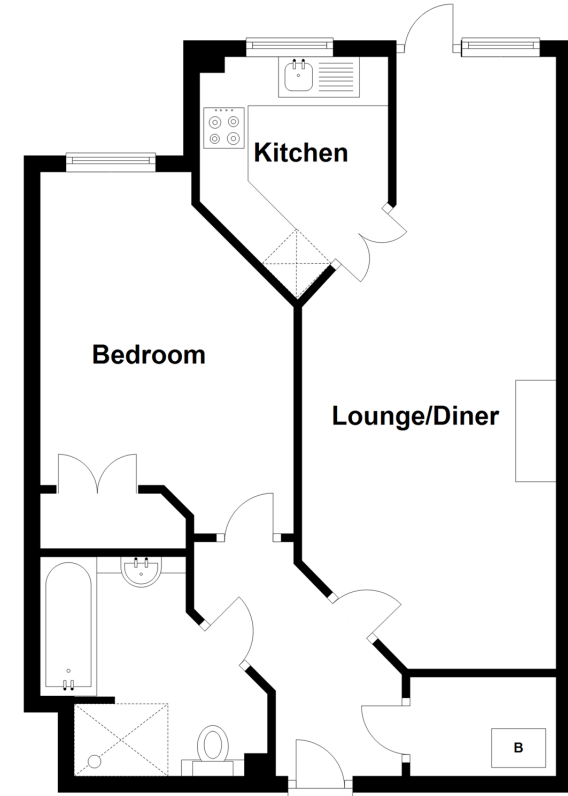
### OUTSIDE

#### Communal Gardens

#### Communal Parking

### Ground Floor

Approx. 53.3 sq. metres (574.2 sq. feet)



**Call Horley - 01293 785338 ■ [cubittandwest.co.uk](http://cubittandwest.co.uk)**

- Legal advice should be taken to verify fixtures/fittings, planning, alterations and/or lease details
- Appliances & services are untested, dimensions are approximate and floor plans are not to scale



20810252/20220516/DT/KV