



**Price**

**£200,000**

**Leasehold**

1x  1x  1x 

**Pine Gardens, Horley,  
Surrey, RH6**

**OVER 60?**

Secure this property  
for up to **59% less!**



**Video Tour available**

**cubitt&west**  
Helping you move forwards



## Main features

- Well presented - ready to move straight into
- Close to town centre and public transport links
- Allocated parking & communal gardens
- Double bedroom with built-in wardrobes, plus generous storage throughout
- No chain above

## Accommodation

### TOP FLOOR

Entrance Hall

Lounge/Diner: 17'0 x 15'7 (5.19m x 4.75m)

Kitchen: 7'9 x 7'8 (2.36m x 2.34m)

Bedroom: 12'2 up to fitted wardrobes x 11'7 (3.71m x 3.53m)

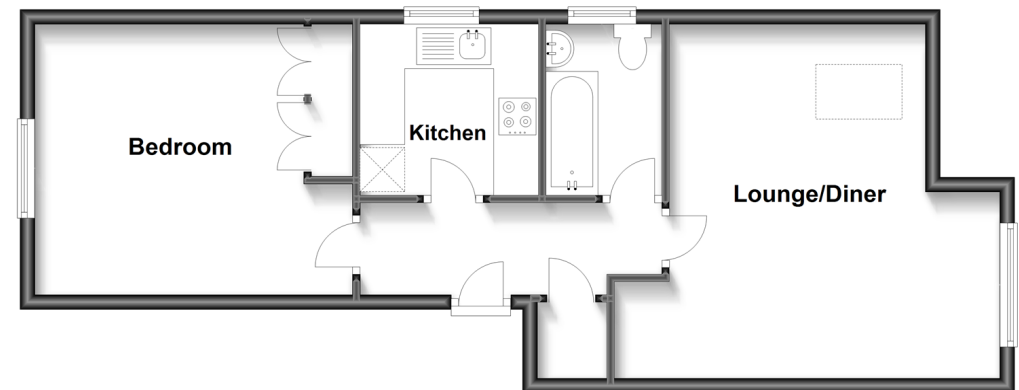
Bathroom

### OUTSIDE

Allocated Parking

Communal Gardens

**Top Floor**  
Approx. 52.4 sq. metres (564.0 sq. feet)



**Call Horley - 01293 785338 ■ [cubittandwest.co.uk](http://cubittandwest.co.uk)**

- Legal advice should be taken to verify fixtures/fittings, planning, alterations and/or lease details
- Through a Homewise Home For Life Plan people aged 60+ can secure this property for up to 59% less, by purchasing a Lifetime Lease.

- Appliances & services are untested, dimensions are approximate and floor plans are not to scale