



Price
£100,000

Leasehold

1x  1x  1x 

**Wavertree Court,
Massetts Road, Horley,
Surrey, RH6**



Video Tour available

cubitt&west
Helping you move forwards



Main features

- First floor retirement flat in complex for the over 60's
- Walking distance of town centre and local amenities
- Extensive communal guest facilities & resident management team
- Redecorated and recarpeted throughout
- Delightful communal gardens

Accommodation

FIRST FLOOR

Entrance Hall

Lounge/Diner: 25'2 x 10'5 (7.68m x 3.18m)

Kitchen: 8'10 x 7'6 (2.69m x 2.29m)

Bedroom: 19'3 x 10'2 (5.87m x 3.10m)

Bathroom

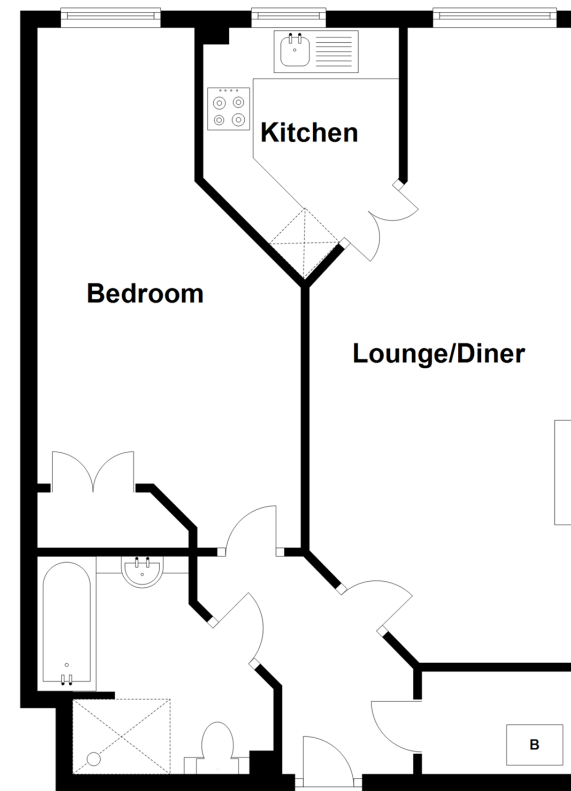
OUTSIDE

Communal Gardens

Communal Parking

First Floor

Approx. 56.1 sq. metres (604.3 sq. feet)



Call Horley - 01293 785338 ■ cubittandwest.co.uk

- Legal advice should be taken to verify fixtures/fittings, planning, alterations and/or lease details
- Appliances & services are untested, dimensions are approximate and floor plans are not to scale