



**Price**

**£215,000**

**Leasehold**

1x  1x  1x 

**Parkhurst Road, Horley,  
Surrey, RH6**

**OVER 60?**

Secure this property  
for up to **59% less!**



**Video Tour available**

**cubitt&west**  
Helping you move forwards





## Main features

- Ground floor maisonette
- Close to public transport links
- Private front & rear gardens
- Separate kitchen & double size bedroom
- 999 year lease from 2011

## Accommodation

### GROUND FLOOR

Entrance Hall

Lounge: 10'1 up to alcove x 9'0  
(3.08m x 2.75m)

Kitchen: 7'8 x 7'1 (2.34m x 2.16m)

Bedroom: 12'2 x 10'9 (3.71m x 3.28m)

Bathroom

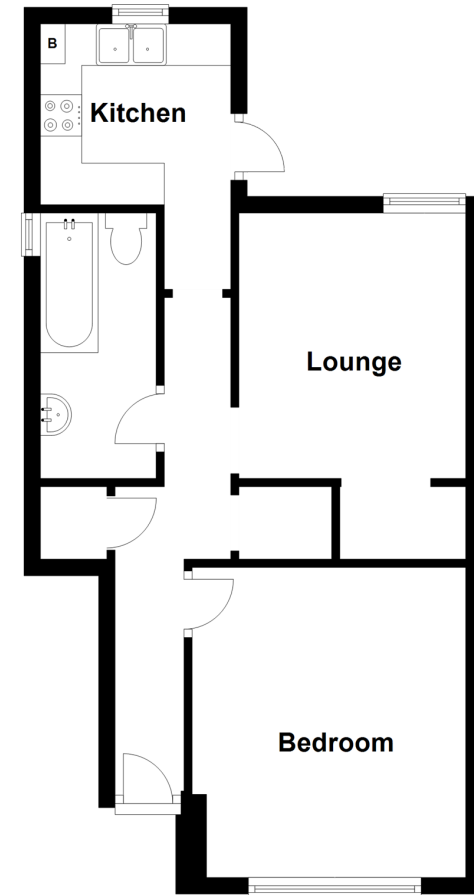
### OUTSIDE

Front Garden

Rear Garden

## Ground Floor

Approx. 42.1 sq. metres (453.1 sq. feet)



**Call Horley - 01293 785338 ■ [cubittandwest.co.uk](http://cubittandwest.co.uk)**

- Legal advice should be taken to verify fixtures/fittings, planning, alterations and/or lease details
- Appliances & services are untested, dimensions are approximate and floor plans are not to scale
- Through a Homewise Home For Life Plan people aged 60+ can secure this property for up to 59% less, by purchasing a Lifetime Lease.



20810525/20230104/DT/SR2