



Price
£160,000

Leasehold

2x  1x  1x 

**Meadowcroft Close,
Horley, Surrey, RH6**

OVER 60?

Secure this property
for up to **59% less!**

cubitt&west
Helping you move forwards



Main features

- Cash buyers only - great addition to portfolio
- Spacious first floor maisonette overlooking communal green to the front
- Some updating required
- Two double bedrooms
- Private rear garden

Accommodation

FIRST FLOOR

Entrance Hall

Lounge/Dining Room: 17'8 x 15'1 (5.39m x 4.60m)

Kitchen: 10'1 x 9'3 (3.08m x 2.82m)

Bedroom 1: 12'9 x 10'9 (3.89m x 3.28m)

Bedroom 2: 13'5 x 9'4 (4.09m x 2.85m)

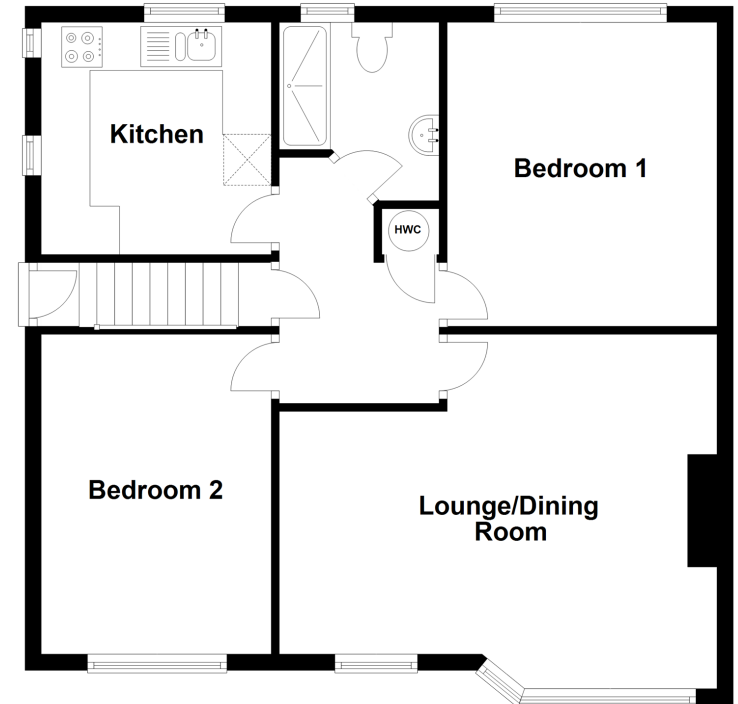
Bathroom

OUTSIDE

Private Rear Garden

First Floor

Approx. 66.6 sq. metres (716.5 sq. feet)



Call Horley - 01293 785338 ■ cubittandwest.co.uk

- Legal advice should be taken to verify fixtures/fittings, planning, alterations and/or lease details
- Appliances & services are untested, dimensions are approximate and floor plans are not to scale
- Through a Homewise Home For Life Plan people aged 60+ can secure this property for up to 59% less, by purchasing a Lifetime Lease.



20810537/20230428/EM20/EM20