



**OVER 60?**

Secure this property  
for up to **59% less!**



Video Tour available

**Price**

**£850,000**

**Freehold**

4x 3x 3x

**Church Road, Horley,  
Surrey, RH6**

**cubitt&west**  
Helping you move forwards





## Main features

- Many original features including open fireplaces
- Driveway for multiple cars & garage
- Scope for improvement & loft conversion (subject to planning permission)
- En-suite shower room plus bathroom & further shower room
- Mature rear garden

## Accommodation

### GROUND FLOOR

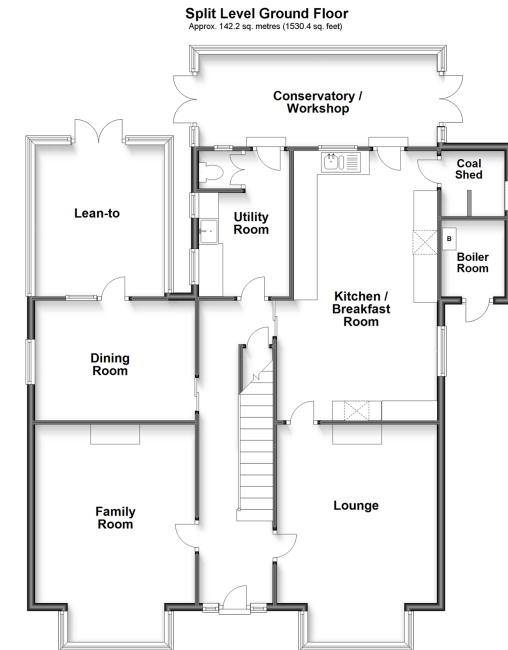
Entrance Hall  
 Lounge: 18'1 x 13'4 (5.52m x 4.07m)  
 Family Room: 17'9 x 13'3 (5.41m x 4.04m)  
 Dining Room: 13'3 x 10'1 (4.04m x 3.08m)  
 Utility Room & Toilet  
 Kitchen/Breakfast Room: 22'5 x 13'7 (6.84m x 4.14m)  
 Lean-To  
 Conservatory/Workshop

### FIRST FLOOR

Landing  
 Bedroom 1: 13'5 x 12'9 (4.09m x 3.89m)  
 En-Suite Shower Room  
 Bedroom 2: 18'3 x 13'4 (5.57m x 4.07m)  
 Bedroom 3: 18'0 x 13'4 (5.49m x 4.07m)  
 Bedroom 4: 13'4 x 10'2 (4.07m x 3.10m)  
 Bathroom  
 Shower room

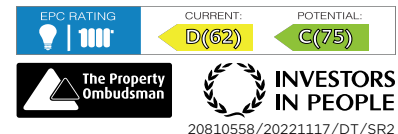
### OUTSIDE

Front Garden  
 Driveway  
 Garage  
 Rear Garden



**Call Horley - 01293 785338 ■ cubittandwest.co.uk**

- Legal advice should be taken to verify fixtures/fittings, planning, alterations and/or lease details
- Appliances & services are untested, dimensions are approximate and floor plans are not to scale
- Through a Homewise Home For Life Plan people aged 60+ can secure this property for up to 59% less, by purchasing a Lifetime Lease.



20810558/20221117/DT/SR2